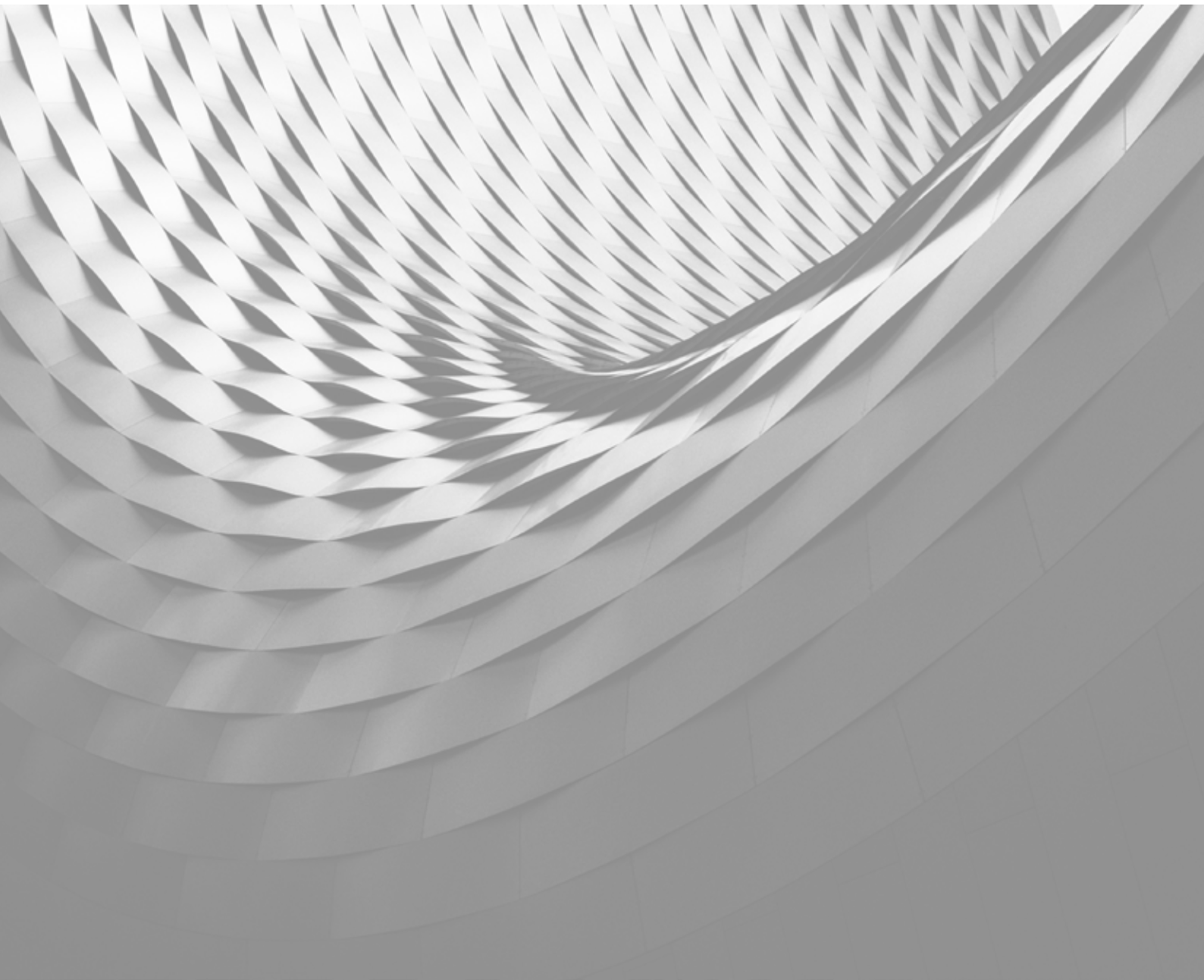
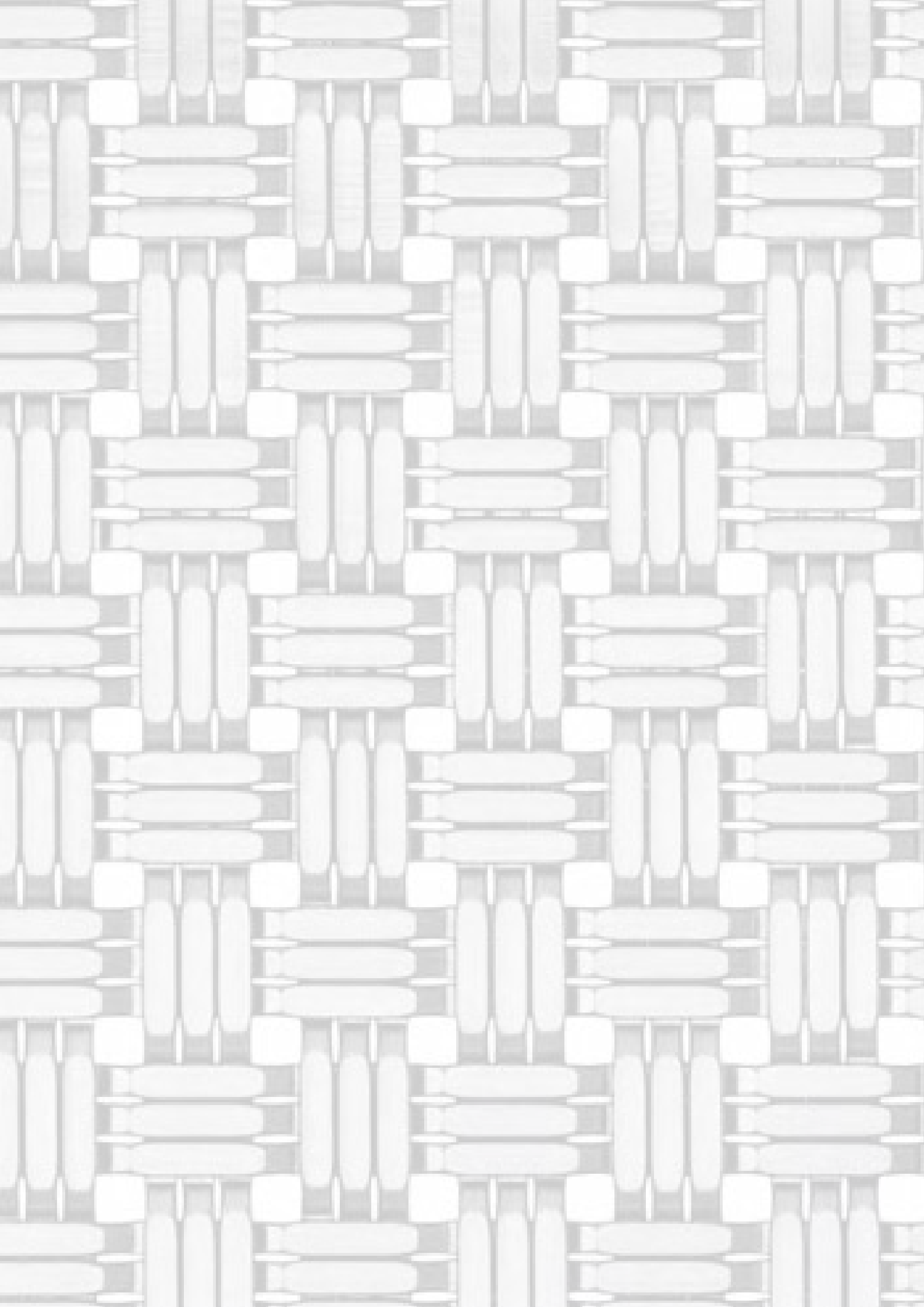
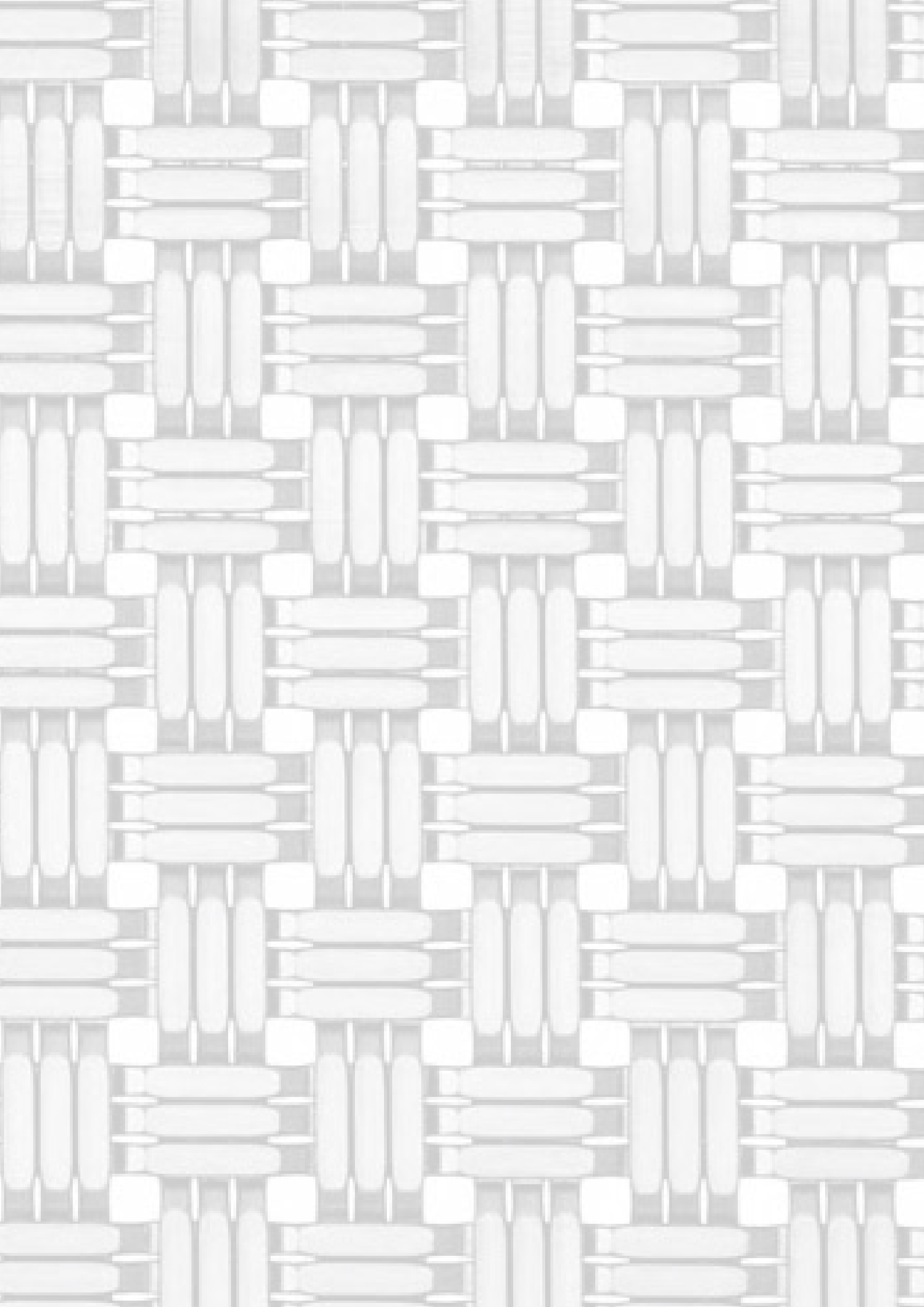

Stainless Steel **METAL FABRIC** and **EXPANDED METALS**









Hidayathulla Abbas

Founder & Chairman Hidayath Group

Hidayathulla Abbas began his humble voyage in 1970's. He transitioned from trading in hardware to stainless steel material supplies and gradually gained sustainable momentum in becoming the market leader in trading, processing, project supplies, manufacturing and services of architectural and industrial products and solutions in stainless steel and allied metals.

Under his leadership as the founding Chairman of HIDAYATH GROUP, the group went from strength to strength and in just four decades it became one of the most recognised companies in the stainless steel industry globally. The pragmatic and organic growth of the group is an attribute to his vision, leadership, hard work, commitment, risk taking appetite and dedication.

His focus and understanding always aligns and complies with his underlined group objectives, with his continuous technological advancement, strategic acquisition and well planned forays into new markets, concrete inroads are always made into Architectural and Industrial sectors.

MISSION & VISION

Mission

To be “the Complete Solution Provider” in Stainless steel and allied metals to Architectural and Industrial sectors across Middle East, South East Asia, Africa and CIS Countries.

To develop solutions by offering expertise and support it with continuous life-cycle services

Commitment to training our personnel, along with continuously upgrading and modernizing our equipment and methods to exceed our clients’ expectations.

As an ISO certified company, we adhere to the most stringent industry standards to ensure unparalleled quality at all levels of operation.

Vision

To be the top performing and most admired company in the Middle East offering complete solutions in stainless steel and allied metals.

We aim to be relied upon as the partner-of-choice by our diverse clientele irrespective of their business magnitude.

Our vision serves as the framework for our road-map and guides every aspect of our business by describing what we need to accomplish in order to continue achieving sustainable, quality growth.

Founded by Hidayathullah Abbas in 1976, Hidayath Group has emerged as a global enterprise providing world-class stainless steel and allied metal products and solutions to Architectural and Industrial sectors.

Headquartered in Dubai, UAE, the group operates in more than twenty countries across five continents, with a mission to achieve global leadership as the complete solution provider in stainless steel and allied metals.

Manufacturing, Material Supplies and Services form the core of Hidayath Group's business that commenced in Abu Dhabi four decades ago and today enjoys an enviable customer base in Architectural and Industrial sectors across all emerging markets world wide.

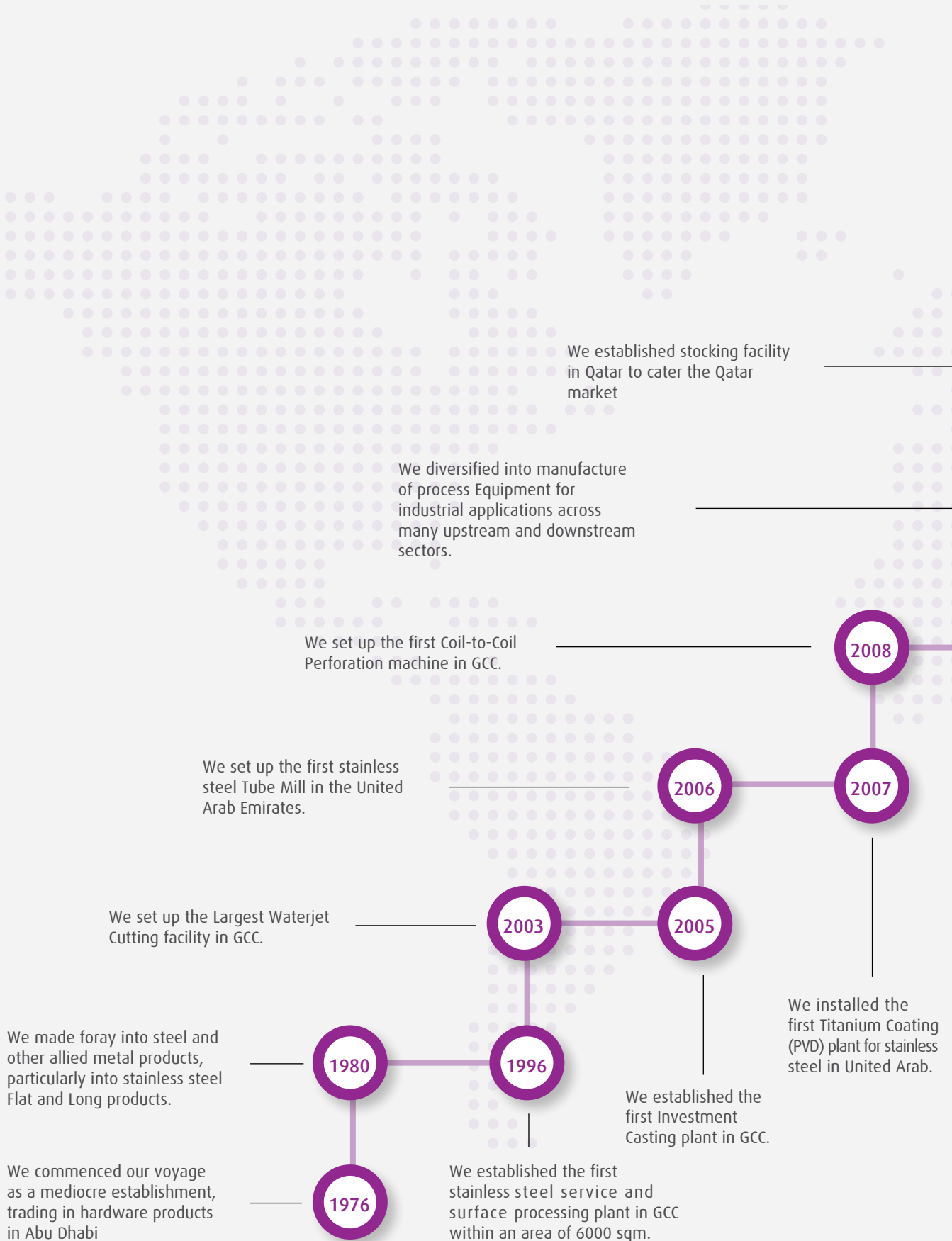
Our pragmatic growth is an attribute to our able leadership and a dedicated work force which understands and complies with the group initiatives and underlined objectives.

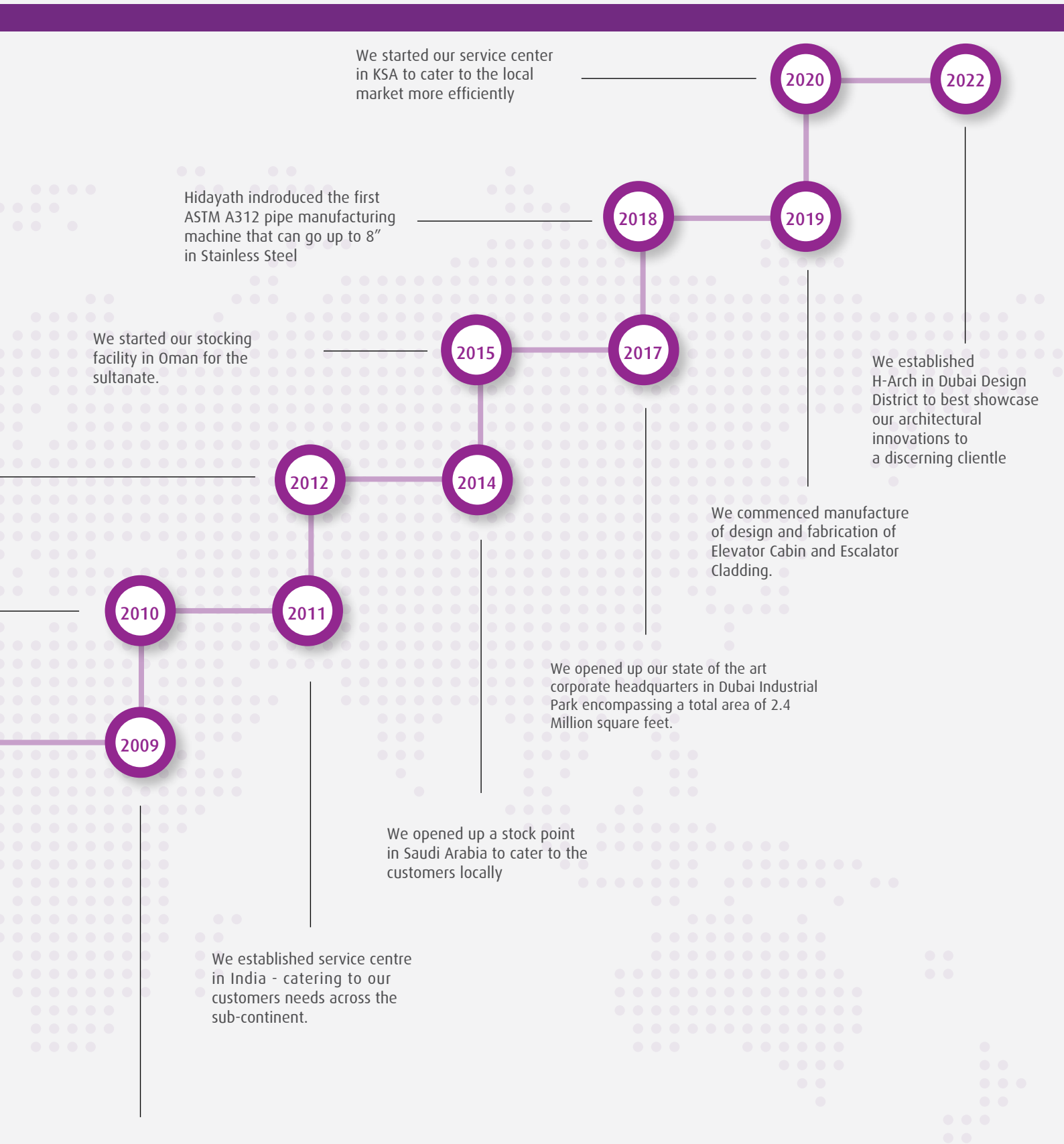
Going forward, the group continues to invest in training its personnel, technologically advanced machinery, strategic acquisitions and well planned forays into new markets. Our Architectural line of business primarily focuses on manufacturing and supplies of world class architectural products and solutions in stainless steel and other allied metals. We pride ourselves in being pioneers in the manufacturer of stainless Handrail Equipment and Glass Fittings under our brand name **H-Fit** and also produce custom Bathroom Equipment and Accessories under brand name **H-bath**, apart from being one of the largest manufacturers of ornamental Pipes, Tubes & Fittings for architectural applications. We also produce Gratings, Channels, Bollards, Tac Tiles (Long & Round), Metal Doors & Flag Posts in stainless Steel and associated metals.

We procure, stock and supply large inventories in stainless steel finished and semi-finished long, Flat and Tubular products for architectural applications in addition to a wide array of surface treatment essentials.

- In Longs, we supply Angles, U-Channels, Round, Square and Flat Bars.
- In Flats, we supply Sheets, Plates and Coils.
- In Tubulars, we supply pipes, Tubes with Groove and Fittings.
- In Surface Treatment chemicals, we supply cleaning essentials and Abrasives.

HISTORY & MILESTONES





We established the first Hot Rolled stainless steel Cut-to-length in GCC

2009

2010

2011

2012

2014

2015

2017

2018

2019

2020

2022

Hidayath introduced the first ASTM A312 pipe manufacturing machine that can go up to 8" in Stainless Steel

We started our stocking facility in Oman for the sultanate.

We started our service center in KSA to cater to the local market more efficiently

We opened up a stock point in Saudi Arabia to cater to the customers locally

We opened up our state of the art corporate headquarters in Dubai Industrial Park encompassing a total area of 2.4 Million square feet.

We commenced manufacture of design and fabrication of Elevator Cabin and Escalator Cladding.

We established H-Arch in Dubai Design District to best showcase our architectural innovations to a discerning clientele





METAL FABRIC

CONCEPT & APPLICATIONS

CONCEPT

Also referred to as wire cloth or wire fabric, HIDEYATH METAL FABRIC is an extremely versatile product that has thousands of different applications. What makes our metal fabric such an adaptable product is that it can be produced in a countless number of specifications. Depending upon manufacturing capabilities, there are almost endless combinations of opening sizes and diameter wires that can be produced, either in a woven or welded construction.

APPLICATIONS

Due to the functional and aesthetic characteristics of our Metal Fabric, it offers new and versatile fields of applications in architecture. Architectural wire mesh convinces with its noble optic and meets at the same time the highest standards of safety and stability in indoor and outdoor applications.

Our METAL FABRIC is also used in industrial applications when separation or filtration is needed; it is also popular for use in commercial applications, like insect screening or animal fencing. More widespread applications for metal fabric include: various types of security mesh, like window, machine and stairwell panel guards, fireplace screen, bird screen, gutter guards, ventilation and RFI shielding. More recently, metal fabric has emerged into the architectural field and the art scene.

We pride in maintaining one of the most complete and extensive METAL FABRIC inventories in Gulf and MENA region. We manufacture and stock thousands of different Metal Fabric specifications including: woven and welded wire mesh, space (clear opening) wire cloth, standard or market grade, milling grade and bolting grade.

As a complete solution provider of stainless steel products and solutions to architectural sectors we have supplied metal fabric products to many renowned projects across GCC, Middle East, Europe, South East Asia and many CIS countries.

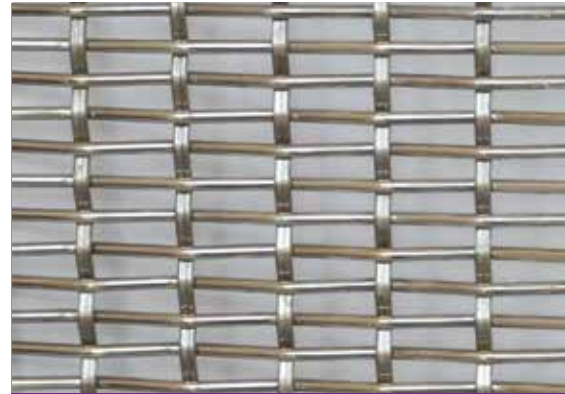


METAL FABRIC



HMF-1238

Material : Stainless Steel
 Warp Dia : 1.2 mm x 2 Weft Pitch : 3.8 mm
 Wrap Pitch : 17.5 mm Weight : 7.95 kg/m²
 Weft Dia : 2 mm Open Area 43%
 Max Thickness : 3.3 mm



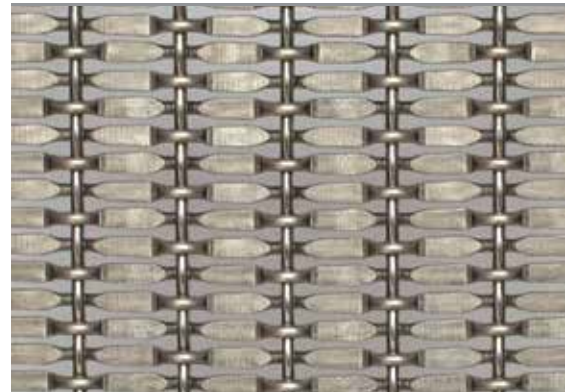
HMF-6213

Material : Stainless Steel
 Warp Dia : 1.2 mm x 2 Weft Pitch : 5mm
 Wrap Pitch : 17.5 mm Weight : 6.15 kg/m²
 Weft Dia : 2 mm Open Area 51%
 Max Thickness : 4.2 mm



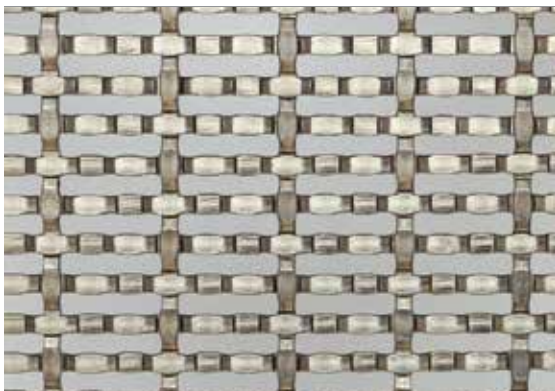
HMF-2176

Material : Stainless Steel
 Warp Dia : 1.5 mm Weft Pitch : 1.5 mm
 Wrap Pitch : 17.5 mm Weight : 10.98 kg/m²
 Weft Dia : 2 mm Open Area 0%
 Max Thickness : 4.7 mm



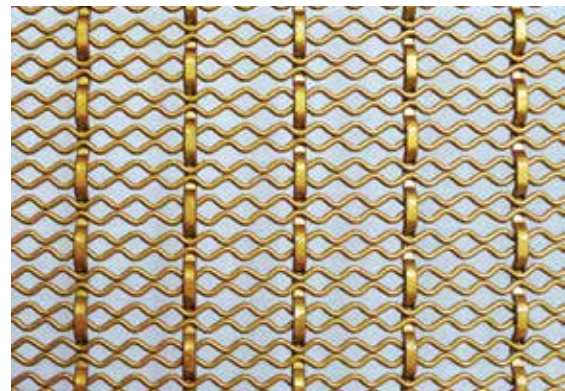
HMF-4135

Material : Stainless Steel
 Warp Dia : 2.5 mm Weft Pitch : 5 mm
 Wrap Pitch : 20 mm Weight : 9.92 kg/m²
 Weft Dia : 2.5 mm Open Area 25%
 Max Thickness : 5 mm



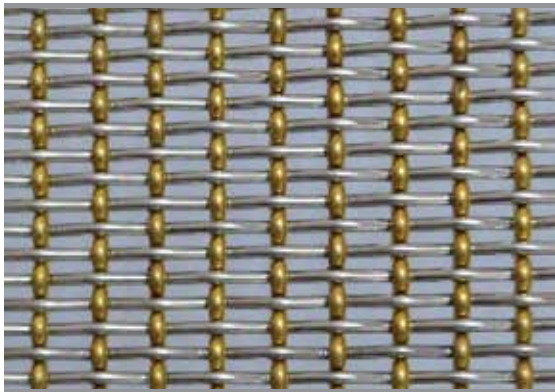
HMF-5483

Material : Stainless Steel
 Warp Dia : 3 mm x 2 Weft Pitch : 7 mm
 Wrap Pitch : 20 mm Weight : 5.6 kg/m²
 Weft Dia : 3mm x 2mm Open Area 27.3%
 Max Thickness : 3.3 mm



HMF-2510

Material : Stainless Steel
 Warp Dia : 1.5 mm x 3 Weft Pitch : 4 mm
 Wrap Pitch : 24 mm Weight : 5.6 kg/m²
 Weft Dia : 1.6 mm Open Area 45.5%
 Max Thickness : 4.5 mm



HMF-1654

Material : Stainless Steel & Copper
 Warp Dia : 1.35 mm Weft Pitch : 5.4 mm
 Wrap Pitch : 2.5 mm Weight : 7.64 kg/m²
 Weft Dia : 1.6 mm x 1 Open Area 32%
 Max Thickness : 3.2 mm



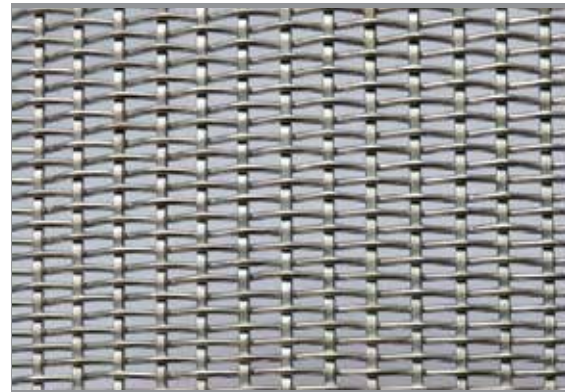
HMF-0185

Material : Stainless Steel & Red Copper
 Warp Dia : 0.8 mm Weft Pitch : 7.25 mm
 Wrap Pitch : 2.88 mm Weight : 4.1 kg/m²
 Weft Dia : 1.5 mm Open Area 53.9%
 Max Thickness : 2.5 mm



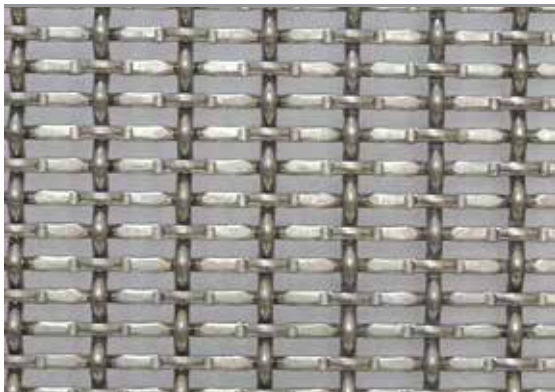
HMF-Z2176

Material : Stainless Steel
 Warp Dia : 2 mm Weft Pitch : 4 mm
 Wrap Pitch : 17.5 mm Weight : 5.38 kg/m²
 Weft Dia : 1.5 mm Open Area 58%
 Max Thickness : 3.05 mm



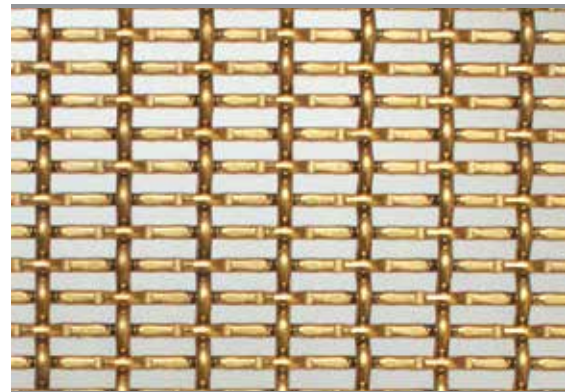
HMF-M2176

Material : Stainless Steel
 Warp Dia : 1 mm Weft Pitch : 7 mm
 Wrap Pitch : 3 mm Weight : 9 kg/m²
 Weft Dia : 2mm x 1mm Open Area 9.5%
 Max Thickness : 3 mm



HMF-3135

Material : Stainless Steel
 Warp Dia : 2 mm Weft Pitch : 4 mm
 Wrap Pitch : 9 mm Weight : 7.96 kg/m²
 Weft Dia : 1.8 mm Open Area 44%
 Max Thickness : 3.2 mm

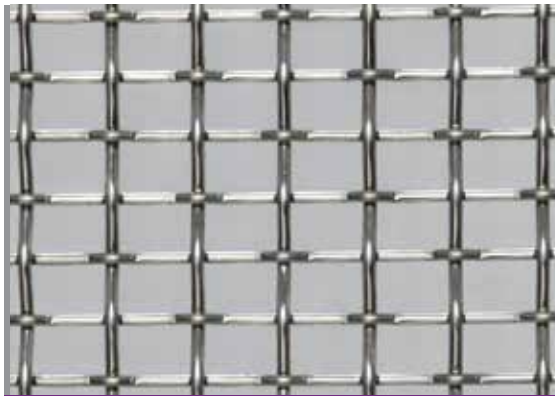


HMF-3135G

Material : Stainless Steel
 Warp Dia : 2 mm Weft Pitch : 4 mm
 Wrap Pitch : 9 mm Weight : 7.96 kg/m²
 Weft Dia : 1.8 mm Open Area 44%
 Max Thickness : 3.2 mm

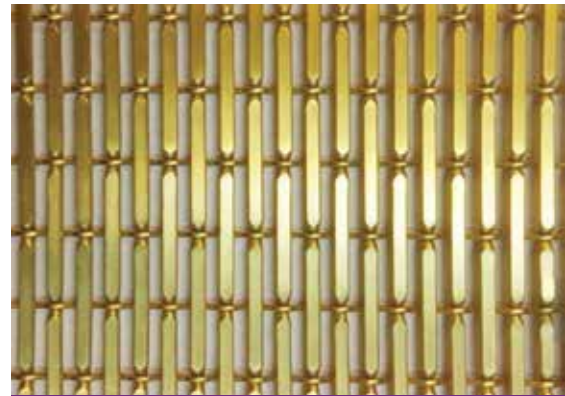


METAL FABRIC



HMF-6276

Material : Stainless Steel
 Warp Dia : 2 mm Weft Pitch : 17.5 mm
 Wrap Pitch : 12.7 mm Weight : 5.26 kg/m²
 Weft Dia : 3 mm Open Area 79 %
 Max Thickness : 6 mm



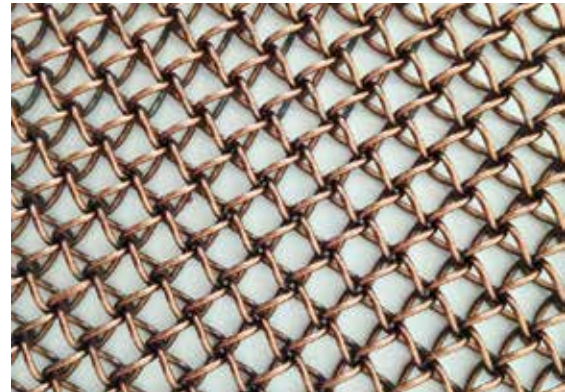
HMF-6010

Material : Aluminum
 Warp Dia : 1.5 mm Weft Pitch : 17.5 mm
 Wrap Pitch : 4 mm Weight : 2.6 kg/m²
 Weft Dia : 2 mm Open Area 45.7 %
 Max Thickness : 3 mm



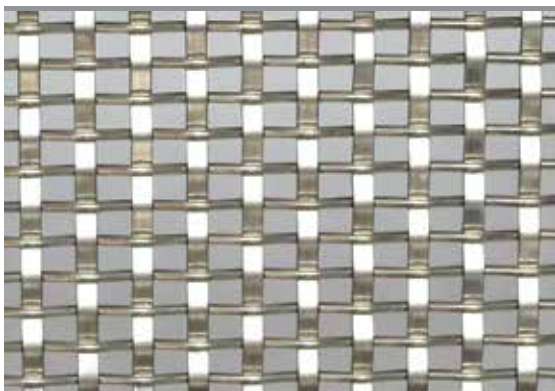
HMF-D2175

Material : Stainless Steel
 Warp Dia : 1.5 x 1 mm Weight : 8.16 kg/m²
 Wrap Pitch : 2 mm Open Area 0%
 Weft Dia : 17.5 mm
 Max Thickness : 4.5 mm



HMF-F1510

Material : Stainless Steel
 Wire Dia : 1.5 mm Weight : 2.75 kg/m²
 Wire Pitch : 10 mm Open Area 75%
 Max Thickness : 12 mm



HMF-5875

Material : Stainless Steel
 Warp Dia : 1 x 4 mm Weft Pitch : 6 mm
 Wrap Pitch : 10 mm Weight : 6.1 kg/m²
 Weft Dia : 2mm Open Area 40 %
 Max Thickness : 5 mm



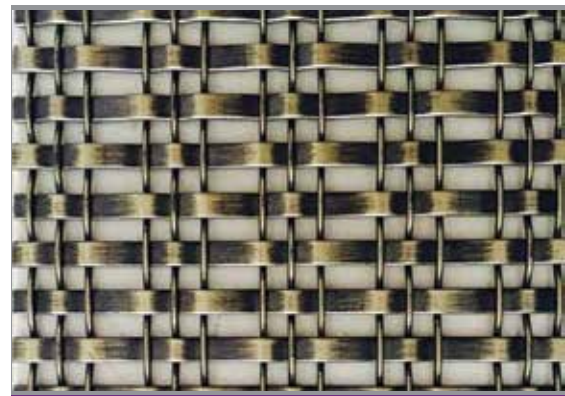
HMF-T3B2

Material : Stainless Steel & Copper
 Warp Dia : 2 mm x 2 Weft Pitch : 10 mm
 Wrap Pitch : 10 mm Weight : 14.22 kg/m²
 Weft Dia : 2 mm x 3 Open Area 32 %
 Max Thickness : 6 mm



HMF-1513

Material : Stainless Steel
 Warp Dia : 1.5 mm x 3 Weft Pitch : 3 mm
 Wrap Pitch : 20 mm Weight : 5.3 kg/m²
 Weft Dia : 5mm x 1mm Open Area 36.4%
 Max Thickness : 2.5 mm



HMF-1513G

Material : Stainless Steel
 Warp Dia : 1.5 mm x 3 Weft Pitch : 3 mm
 Wrap Pitch : 20 mm Weight : 5.3 kg/m²
 Weft Dia : 5mm x 1mm Open Area 36.4 %
 Max Thickness : 2.5 mm



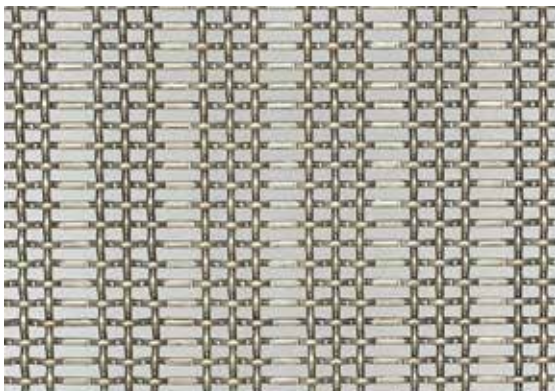
HMF-3185B

Material : Stainless Steel
 Warp Dia : 1 mm x 2 Weft Pitch : 8 mm
 Wrap Pitch : 34 mm Weight : 3.5 kg/m²
 Weft Dia : 1 mm x 2 Open Area 72%
 Max Thickness : 2 mm



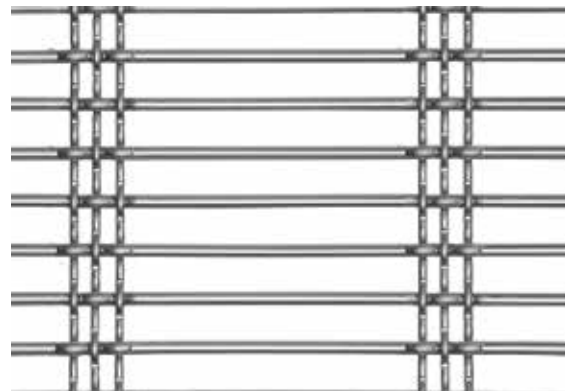
HMF-7543

Material : Stainless Steel
 Warp Dia : 3 mm x 4 Weft Pitch : 14 mm
 Wrap Pitch : 75 mm Weight : 10.3 kg/m²
 Weft Dia : 4 mm Open Area 42 %
 Max Thickness : 8.5 mm



HMF-3162

Material : Stainless Steel
 Warp Dia : 1.6 mm Weft Pitch : 3.5 mm
 Wrap Pitch : 20 mm Weight : 6.7 kg/m²
 Weft Dia : 1.2 mm Open Area 60 %
 Max Thickness : 9.2 mm



HMF-3540

Material : Stainless Steel
 Warp Dia : 2.45mm x 3 Weft Pitch : 13.5 mm
 Wrap Pitch : 100 mm Weight : 8.66 kg/m²
 Weft Dia : 4 mm Open Area 66.8 %
 Max Thickness : 8.9 mm



METAL FABRIC



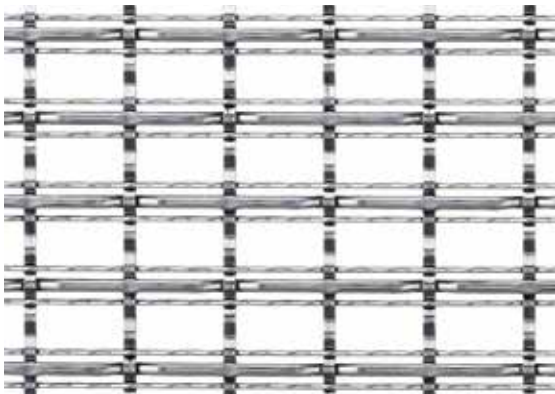
HMF-4311

Material : Stainless Steel
 Warp Dia : 3 mm x 3 Weft Pitch : 15 mm
 Wrap Pitch : 105 mm Weight : 8.54 kg/m²
 Weft Dia : 4 mm Open Area 64.5 %
 Max Thickness : 10 mm



HMF-3259

Material : Stainless Steel
 Warp Dia : 2.5 mm x 3 Weft Pitch : 12 mm
 Wrap Pitch : 90.5 mm Weight : 6.08 kg/m²
 Weft Dia : 3 mm Open Area 68.8 %
 Max Thickness : 5.5 mm



HMF-3821

Material : Stainless Steel
 Warp Dia : 1mm x 2mm Weft Pitch : 17.5 mm
 Wrap Pitch : 15 mm Weight : 4 kg/m²
 Weft Dia : 1.2 mm x 2.5 Open Area 60.2 %
 Max Thickness : 4.4 mm



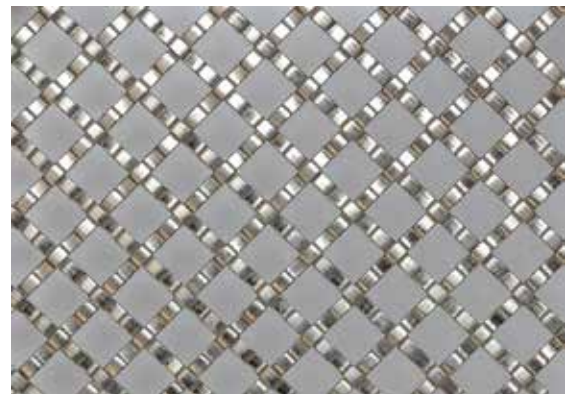
HMF-712X

Material : Stainless Steel
 Flat No.s : 1 Weight : 14 kg/m²
 Flat Dia : 1.5 x 7 mm Open Area 17.4 %
 Flat Pitch 12 mm
 Max Thickness : 3 mm



HMF-1510G

Material : Stainless Steel
 Flat No.s : 1 Weight : 8.6 kg/m²
 Flat Dia : 1.5 x 3.5 mm Open Area 42.2 %
 Flat Pitch 10 mm
 Max Thickness 3 mm



HMF-2157

Material : Stainless Steel
 Flat No.s : 1 Weight : 4.5 kg/m²
 Flat Dia : 1.2 x 3 mm Open Area 59 %
 Flat Pitch 13 mm
 Max Thickness 3 mm



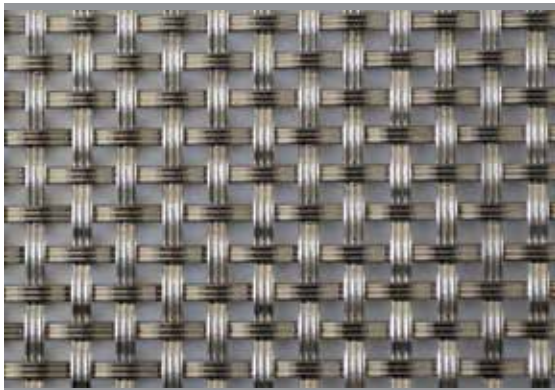
HMF-2027

Material : Stainless Steel
 Flat No.s : 1 Weight : 8.1 kg/m²
 Flat Dia : 1.2 x 2.5 mm Open Area 25 %
 Flat Pitch 6 mm
 Max Thickness 2.5 mm



HMF-3012

Material : Stainless Steel
 Flat No.s : 1 Weight : 9.38 kg/m²
 Flat Dia : 2.5 mm Open Area 42.2 %
 Flat Pitch 8.5 mm
 Max Thickness 3 mm



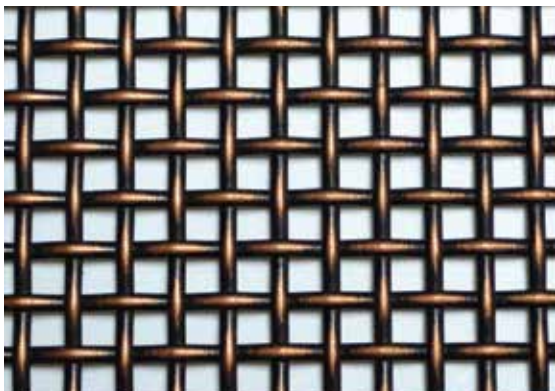
HMF-3150

Material : Stainless Steel
 Flat No.s : 1 Weight : 6.68 kg/m²
 Flat Dia : 1 x 3 mm Open Area 59 %
 Flat Pitch 6 mm
 Max Thickness 3.2 mm



HMF-1593

Material : Stainless Steel
 Warp Dia : 0.6x1.75 mm Weft Pitch : 5 mm
 Wrap Pitch : 5 mm Weight : 3.36 kg/m²
 Weft Dia : 0.6x1.75 mm Open Area 41 %
 Max Thickness : 2 mm



HMF-1593G

Material : Stainless Steel
 Warp Dia : 0.6x1.75 mm Weft Pitch : 5 mm
 Wrap Pitch : 5 mm Weight : 3.36 kg/m²
 Weft Dia : 0.6x1.75 mm Open Area 41 %
 Max Thickness : 2 mm

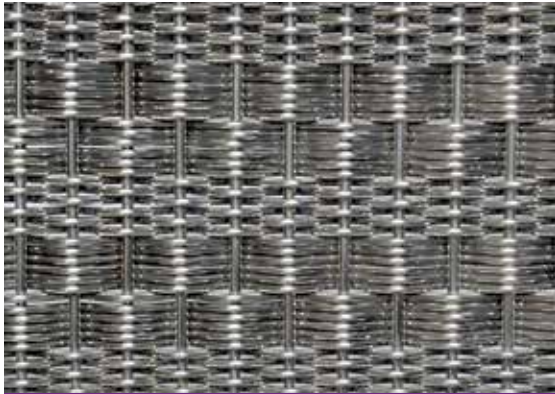


HMF-5512

Material : Stainless Steel
 Warp Dia : 2 mm Weft Pitch : 5 mm
 Wrap Pitch : 5 mm Weight : 8.37 kg/m²
 Weft Dia : 1 x 2 mm Open Area 34.9 %
 Max Thickness : 4 mm

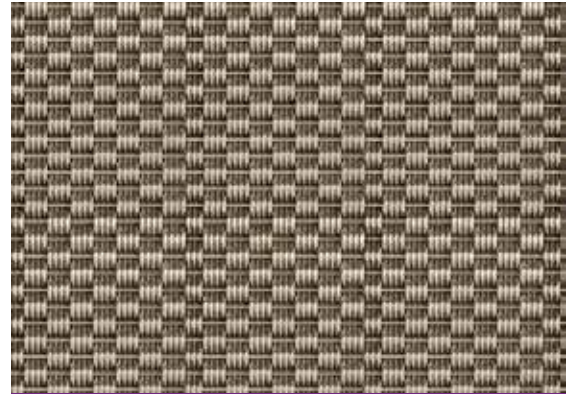


METAL FABRIC



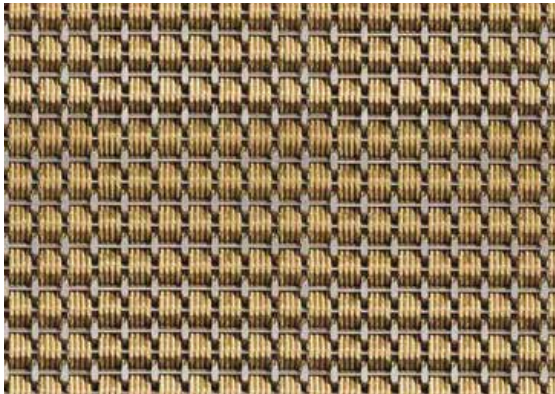
HMF-2108

Material : Stainless Steel
 Warp Dia : 2 mm Weft Pitch : 1.5 mm
 Wrap Pitch : 8 mm Weight : 12.7 kg/m²
 Weft Dia : 1.5 mm Open Area 0 %
 Max Thickness : 4.5 mm



HMF-4215

Material : Stainless Steel
 Warp Dia : 1.5 mm Weft Pitch : 8 mm
 Wrap Pitch : 6.7 mm Weight : 14.8 kg/m²
 Weft Dia : 2 mm x 4 Open Area 0 %
 Max Thickness : 4.9 mm



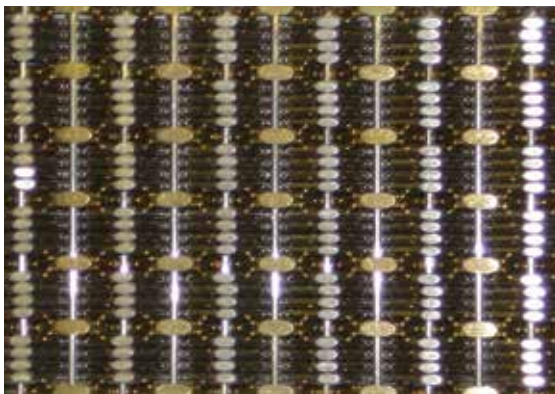
HMF-6715

Material : Stainless Steel & Copper
 Warp Dia : 1.5 mm Weft Pitch : 8 mm
 Wrap Pitch : 6.7 mm Weight : 15 kg/m²
 Weft Dia : 1.5 mm x 4 Open Area 0 %
 Max Thickness : mm



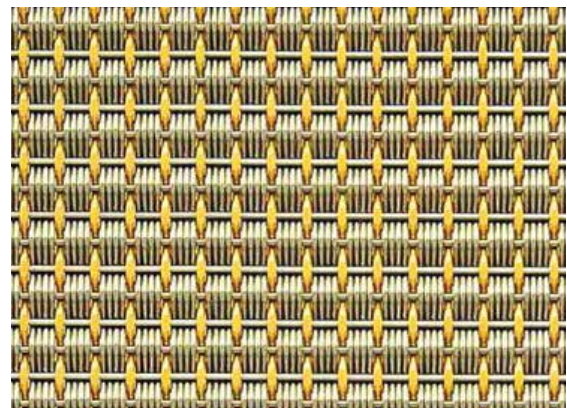
HMF-6415

Material : Stainless Steel
 Warp Dia : 1.5 mm x 4 Weft Pitch : 7 mm
 Wrap Pitch : 10 mm Weight : 16.89 kg/m²
 Weft Dia : 2 mm Open Area 0 %
 Max Thickness : 5 mm



HMF-6215

Material : Stainless Steel & Copper
 Warp Dia : 1.5 mm Weft Pitch : 7.8 mm
 Wrap Pitch : 4 mm Weight : 14.32 kg/m²
 Weft Dia : 1.45 x 4 & 2mm Open Area m²
 Max Thickness : 5 mm 0 %



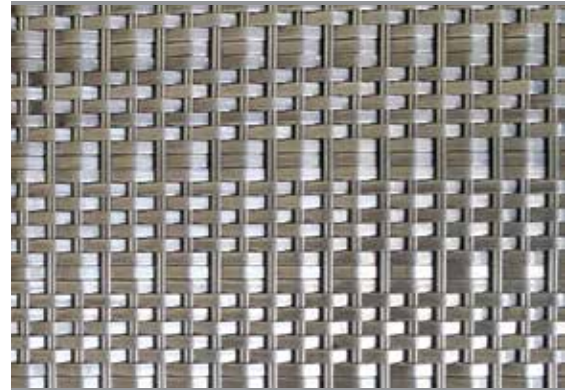
HMF-M6515

Material : Stainless Steel & Copper
 Warp Dia : 1.6 mm x 1 Weft Pitch : 1.5 mm
 Wrap Pitch : 5 mm Weight : 12.78 kg/m²
 Weft Dia : 1.5 mm Open Area 0 %
 Max Thickness : 4.5 mm



HMF-2175

Material : Stainless Steel
 Warp Dia : 2.0 mm Weft Pitch : 2 mm
 Wrap Pitch : 15 mm Weight : 14.5 kg/m²
 Weft Dia : 2 mm Open Area 0%
 Max Thickness : 6 mm



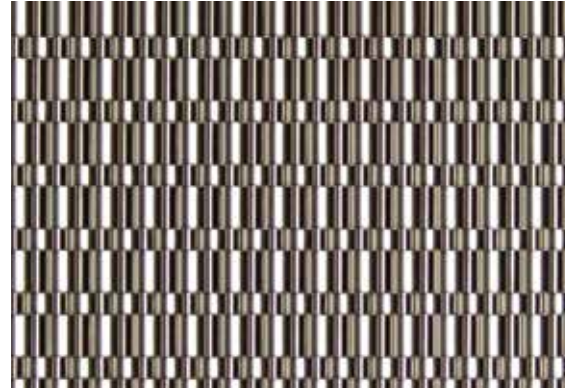
HMF-2208B

Material : Stainless Steel
 Warp Dia : 3.5 x 1 mm Weft Pitch : 9 mm
 Wrap Pitch : 3.5 mm Weight : 11.71 kg/m²
 Weft Dia : 1.5 mm x 2 Open Area 0%
 Max Thickness : 2.3 mm



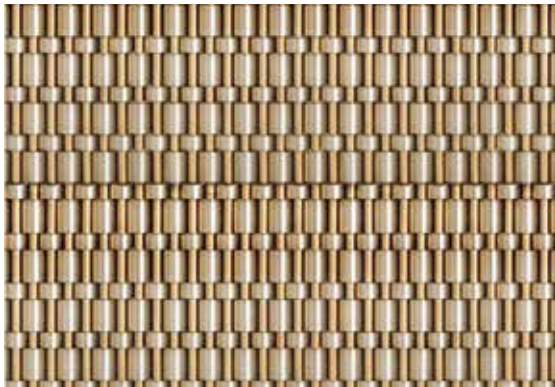
HMF-1523

Material : Stainless Steel
 Warp Dia : 1.5 mm Weft Pitch : 3.88 mm
 Wrap Pitch : 8.5 mm Weight : 13.58 kg/m²
 Weft Dia : 2.5 mm Open Area 0%
 Max Thickness : 2.5 mm



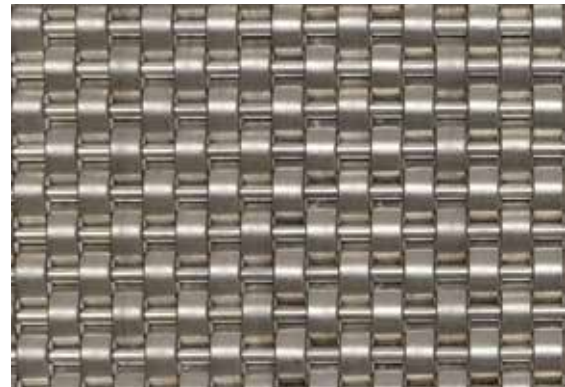
HMF-3656

Material : Stainless Steel
 Warp Dia : 3 mm Weft Pitch : 9.3 mm
 Wrap Pitch : 6.5 mm Weight : 20 kg/m²
 Weft Dia : 6.2x1, 3.1x1 mm Open Area 0%
 Max Thickness : 5.5 mm



HMF-3656T

Material : Stainless Steel & Copper
 Warp Dia : 3 mm Weft Pitch : 15.9 mm
 Wrap Pitch : 6.15 mm Weight : 22.7 kg/m²
 Weft Dia : 12.6x1.2, 6.3x1.2 Open Area 0%
 Max Thickness : 6 mm

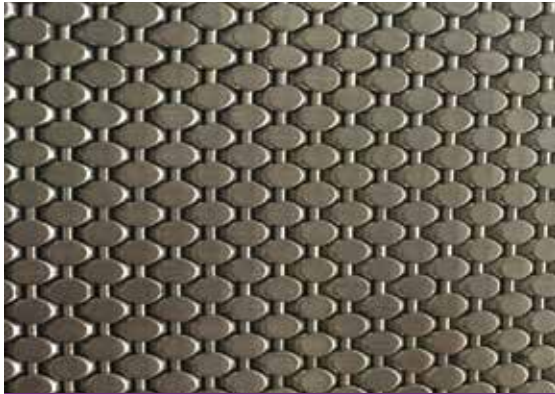


HMF-1405

Material : Stainless Steel
 Warp Dia : 2 mm Weft Pitch : 4 mm
 Wrap Pitch : 5 mm Weight : 8.5 kg/m²
 Weft Dia : 1 x 4 mm Open Area 0%
 Max Thickness : 4 mm

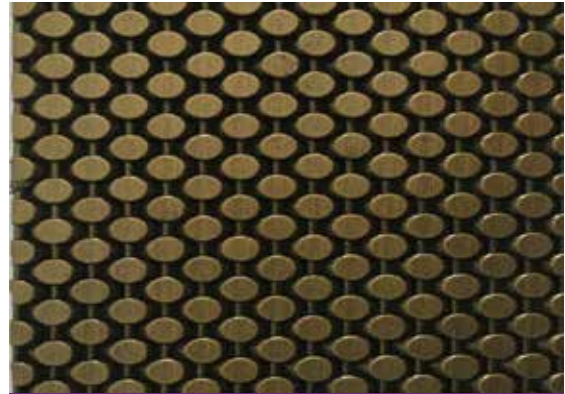


METAL FABRIC



HMF-1548

Material : Stainless Steel
 Warp Dia : 1.5 mm Weft Pitch : 3 mm
 Wrap Pitch : 5 mm Weight : 16.1 kg/m²
 Weft Dia : 2.5 mm Open Area 0 %
 Max Thickness : 3.3 mm



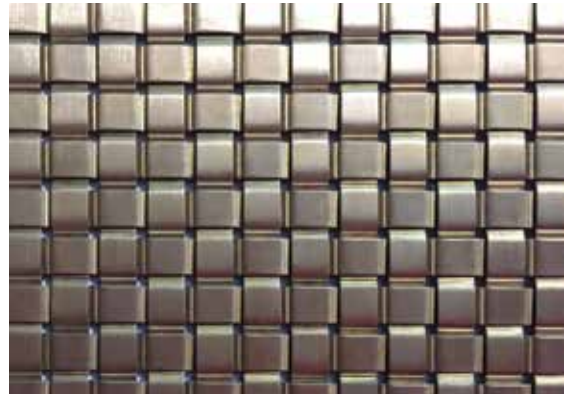
HMF-1548G

Material : Stainless Steel
 Warp Dia : 1.5 mm Weft Pitch : 3 mm
 Wrap Pitch : 5 mm Weight : 16.1 kg/m²
 Weft Dia : 2.5 mm Open Area 0 %
 Max Thickness : 3.3 mm



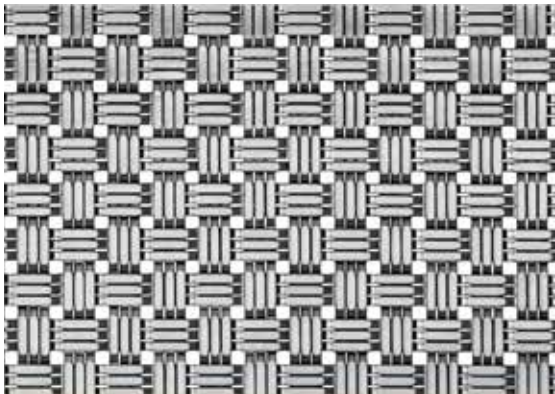
HMF-1515

Material : Stainless Steel
 Warp Dia : 1.5 mm Weft Pitch : 3 mm
 Wrap Pitch : 5 mm Weight : 11.4 kg/m²
 Weft Dia : 2 mm Open Area 0 %
 Max Thickness : 3.2 mm



HMF-3125T

Material : Brass
 Flat No.s : 1 Weight : 12.5 kg/m²
 Flat Dia : 1 x 10 mm Open Area 5.3 %
 Flat Pitch 13 mm
 Max Thickness : 3 mm



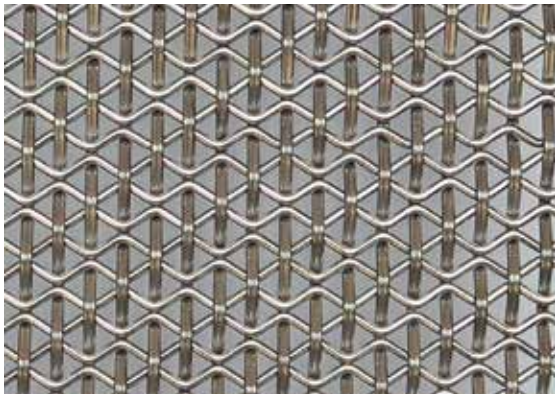
HMF-1512

Material : Stainless Steel
 Flat No.s : 1 Weight : 6.5 kg/m²
 Flat Dia : 0.75 x 2 mm Open Area 9.2 %
 Flat Pitch 15 mm
 Max Thickness 1.8 mm



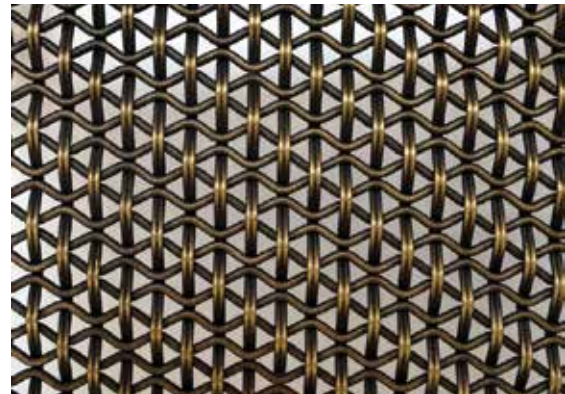
HMF-3411

Material : Stainless Steel
 Flat No.s : 1 Weight : 11.55 kg/m²
 Flat Dia : 1.1 x 3.4 mm Open Area 24 %
 Flat Pitch 6.6 mm
 Max Thickness 2.5 mm



HMF-5211

Material : Stainless Steel
 Warp Dia : 1.2 mm x 2 Weft Pitch : 5 mm
 Wrap Pitch : 22.5 mm Weight : 8.75 kg/m²
 Weft Dia : 2 mm Open Area 31 %
 Max Thickness : 2.5 mm



HMF-5211G

Material : Stainless Steel
 Warp Dia : 1.25 mm x 2 Weft Pitch : 5 mm
 Wrap Pitch : 22.5 mm Weight : 8.75 kg/m²
 Weft Dia : 2 mm Open Area 31 %
 Max Thickness : 2.5 mm



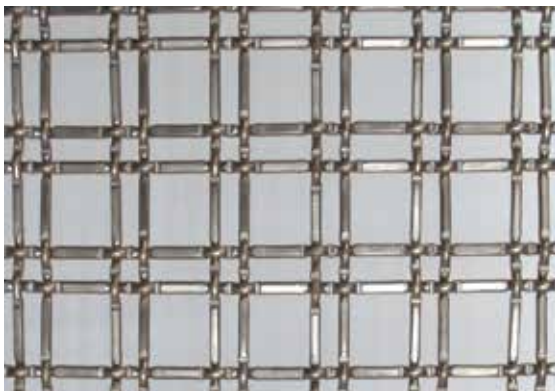
HMF-5213

Material : Stainless Steel
 Warp Dia : 1.2 mm x 2 Weft Pitch : 5 mm
 Wrap Pitch : 22.5 mm Weight : 8.75 kg/m²
 Weft Dia : 2 mm Open Area 31 %
 Max Thickness : 2.5 mm



HMF-2413

Material : Stainless Steel
 Flat No.s : 2 Weight : 3.43 kg/m²
 Flat Dia : 1 x 2.5 mm Open Area 66.2 %
 Flat Pitch 24 mm
 Max Thickness 2.5 mm



HMF-2322

Material : Stainless Steel
 Warp Dia : 3.2 mm x 2 Weft Pitch : 36.75 mm
 Wrap Pitch : 36.75 mm Weight : 7 kg/m²
 Weft Dia : 3.2 mm x 2 Open Area 71 %
 Max Thickness : 6.5 mm



HMF-4005

Material : Stainless Steel
 Flat No.s : 2 Weight : 4.48 kg/m²
 Flat Dia : 5 x 1.1 mm Open Area 56.25 %
 Flat Pitch 40 mm
 Max Thickness 3 mm



METAL FABRIC



HMF-4405

Material : Aluminum Alloy
 Warp Dia : 4 x 0.5 mm Weft Pitch : 4.5 mm
 Wrap Pitch : 4.5 mm Weight : 2.55 kg/m²
 Weft Dia : 4 x 0.5 mm Open Area 0.3 %
 Max Thickness : 3 mm



HMF-0107

Material : Aluminum Alloy
 Warp Dia : 7 x 1 mm Weft Pitch : 7 mm
 Wrap Pitch : 4.5 mm Weight : 7.0 kg/m²
 Weft Dia : 7 x 1 mm Open Area 0 %
 Max Thickness : 3.5 mm



HMF-2156

Material : Stainless Steel
 Flat No.s : 1 Weight : 12.23 kg/m²
 Flat Dia : 6 x 1.5 mm Open Area 25 %
 Flat Pitch 12 mm
 Max Thickness : 2.2 mm



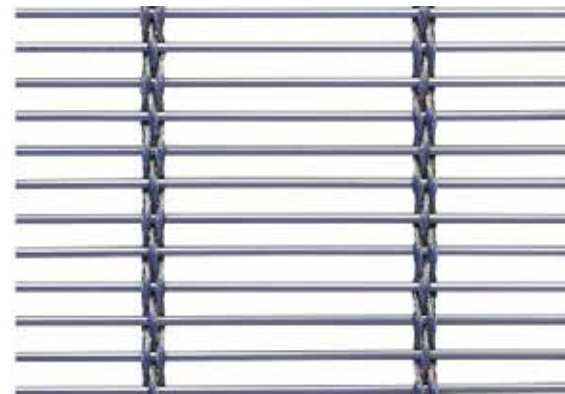
HMF-M2752

Material : Stainless Steel
 Cable Dia : 2.75 mm x 2 Rod Pitch : 14.5 mm
 Cable Pitch : 40 mm Weight : 9.41 kg/m²
 Rod Dia : 4 mm Open Area 62.5 %
 Max Thickness : 9.5 mm



HMF-4310

Material : Stainless Steel
 Warp Dia : 3 x 2 mm Weft Pitch : 15 mm
 Wrap Pitch : 36.5 mm Weight : 10.34 kg/m²
 Weft Dia : 4 mm Open Area 61.3 %
 Max Thickness : 10.2 mm



HMF-M3153

Material : Stainless Steel
 Cable Dia : 2.75 mm x 3 Rod Pitch : 14.5 mm
 Cable Pitch : 110 mm Weight : 8.3 kg/m²
 Rod Dia : 4 mm Open Area 67 %
 Max Thickness : 9.5 mm



HMF-M2647

Material : Stainless Steel
 Cable Dia : 0.75 mm x 4 Rod Pitch : 3 mm
 Cable Pitch : 26.4 mm Weight : 5.2 kg/m²
 Rod Dia : 1.5 mm Open Area 65.3 %
 Max Thickness : 3 mm



HMF-M4235

Material : Stainless Steel
 Cable Dia : 1 mm x 4 Rod Pitch : 3.75 mm
 Cable Pitch : 36 mm Weight : 7.4 kg/m²
 Rod Dia : 2 mm Open Area 41.5 %
 Max Thickness : 4 mm



HMF-M3631

Material : Stainless Steel
 Cable Dia : 3 mm x 3 Rod Pitch : 6 mm
 Cable Pitch : 100 mm Weight : 10.8 kg/m²
 Rod Dia : 3 mm Open Area 44.4 %
 Max Thickness : 9 mm



HMF-3831

Material : Stainless Steel
 Wrap Dia : 1.8 mm x 3 Weft Pitch : 10 mm
 Wrap Pitch : 80 mm Weight : 6.5 kg/m²
 Weft Dia : 3 mm Open Area 65.3 %
 Max Thickness : 6.6 mm



HMF-8914

Material : Stainless Steel
 Wrap Dia : 2 mm x 3 Weft Pitch : 13 mm
 Wrap Pitch : 80 mm Weight : 6.5 kg/m²
 Weft Dia : 3 mm Open Area 71.2 %
 Max Thickness : 9.5 mm

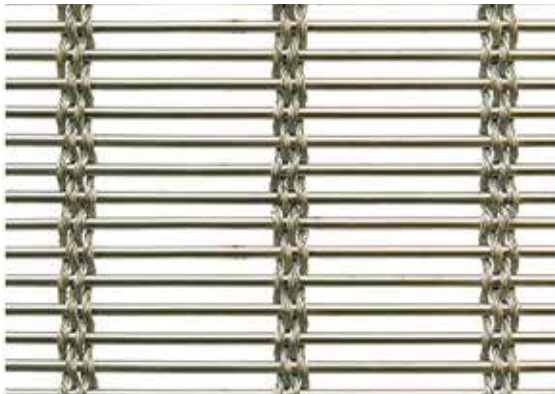


HMF-M3810

Material : Stainless Steel
 Cable Dia : 2 mm x 3 Rod Pitch : 10 mm
 Cable Pitch : 80 mm Weight : 6.6 kg/m²
 Rod Dia : 3 mm Open Area 64.8 %
 Max Thickness : 7 mm



METAL FABRIC



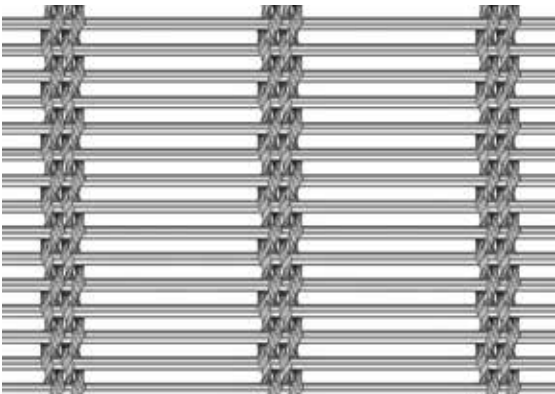
HMF-M3644

Material :	Stainless Steel		
Cable Dia :	3 mm	Rod Pitch :	6 mm
Cable Pitch :	50 mm	Weight :	12.8 kg/m ²
Rod Dia :	3 mm	Open Area :	40.9 %
Mesh Thickness :	6 mm	Surface Treatment :	Free Oil



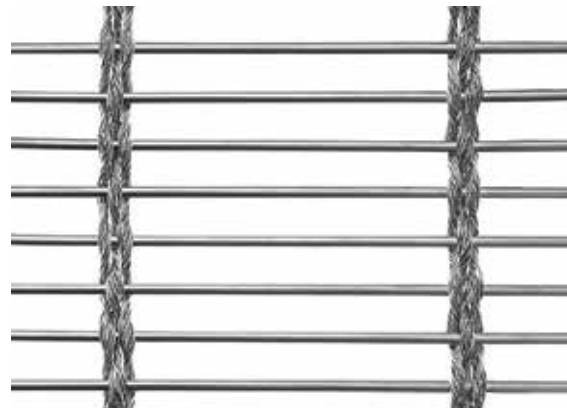
HMF-M3624

Material :	Stainless Steel		
Cable Dia :	2 mm x 4	Rod Pitch :	6 mm
Cable Pitch :	50 mm	Weight :	11.2 kg/m ²
Rod Dia :	3 mm	Open Area :	42 %
Max Thickness :	7 mm		



HMF-M3676

Material :	Stainless Steel		
Cable Dia :	2 mm x 4	Rod Pitch :	6 mm
Cable Pitch :	76 mm	Weight :	11.6 kg/m ²
Rod Dia :	3 mm	Open Area :	--- %
Max Thickness :	---		



HMF-M4528

Material :	Stainless Steel		
Cable Dia :	2.75 mm x 3	Rod Pitch :	14.5 mm
Cable Pitch :	18.4 mm	Weight :	10.9 kg/m ²
Rod Dia :	4.5 mm	Open Area :	60.6 %
Max Thickness :	10.1 mm		



HMF-M3412

Material :	Stainless Steel		
Cable Dia :	2.75 mm x 3	Rod Pitch :	13 mm
Cable Pitch :	120 mm	Weight :	8.87 kg/m ²
Rod Dia :	4 mm	Open Area :	64.5 %
Max Thickness :	9.5 mm		



HMF-M4327

Material :	Stainless Steel & Aluminum		
Cable Dia :	2.5 mm x 4	Rod Pitch :	7 mm
Cable Pitch :	50 mm	Weight :	5.8 kg/m ²
Rod Dia :	3 mm	Open Area :	45.7 %
Max Thickness :	8 mm		



HMF-M4365

Material : Stainless Steel
 Cable Dia : 2.5 mm x 4 Rod Pitch : 6 mm
 Cable Pitch : 50 mm Weight : 12.5 kg/m²
 Rod Dia : 3 mm Open Area 40 %
 Max Thickness : 8 mm



HMF-M3258

Material : Stainless Steel
 Cable Dia : 2.5 mm x 4 Rod Pitch : 6.5 mm
 Cable Pitch : 80 mm Weight : 10.6 kg/m²
 Rod Dia : 3 mm Open Area 47.1 %
 Max Thickness : 8 mm



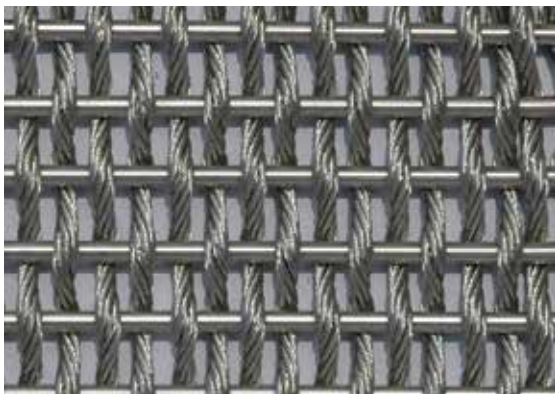
HMF-M4362

Material : Stainless Steel
 Cable Dia : 2 mm x 4 mm Rod Pitch : 7 mm
 Cable Pitch : 80 mm Weight : 9.29 kg/m²
 Rod Dia : 3 mm Open Area 51.4 %
 Max Thickness : 7 mm



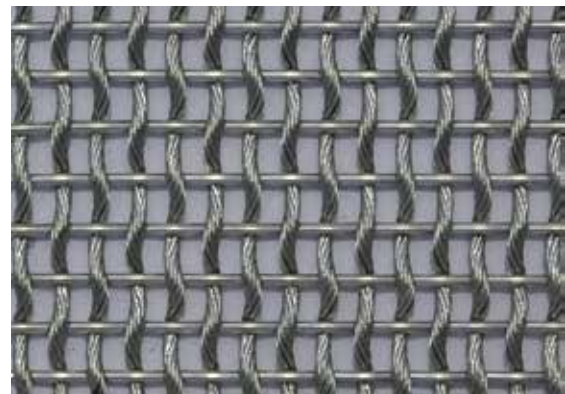
HMF-1319

Material : Stainless Steel
 Cable Dia : 1.6 mm Rod Pitch : 6 mm
 Cable Pitch : 3.2 mm Weight : 6.5 kg/m²
 Rod Dia : 1.2 mm Open Area 38.8 %
 Max Thickness : 1.5 mm



HMF-M2025

Material : Stainless Steel
 Cable Dia : 3 mm (7x7) Rod Pitch : 10 mm
 Cable Pitch : 5 mm Weight : 14.2 kg/m²
 Rod Dia : 3 mm Open Area 28 %
 Max Thickness : 6 mm

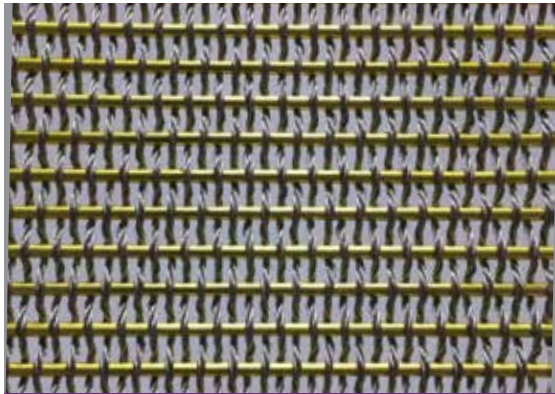


HMF-M6825

Material : Stainless Steel
 Cable Dia : 2.5 mm(7x7) Rod Pitch : 8 mm
 Cable Pitch : 6 mm Weight : 8 kg/m²
 Rod Dia : 2 mm Open Area 43.8 %
 Max Thickness : 4.2 mm



METAL FABRIC



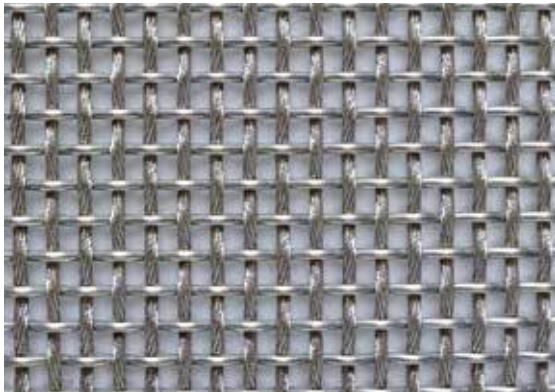
HMF-M2368

Material : Stainless Steel & Aluminum
 Cable Dia : 1.6 mm Rod Pitch : 10 mm
 Cable Pitch : 3.2 mm Weight : 7 kg/m²
 Rod Dia : 3 mm Open Area 35 %
 Max Thickness : 6.8 mm



HMF-M4325

Material : Stainless Steel
 Cable Dia : 2.5 mm Rod Pitch : 6 mm
 Cable Pitch : 5 mm Weight : 12.2 kg/m²
 Rod Dia : 2 mm Open Area 33.4 %
 Max Thickness : 3.5 mm



HMF-ZH2568

Material : Stainless Steel
 Cable Dia : 2.5 mm x 1 Rod Pitch : 8 mm
 Cable Pitch : 6 mm Weight : 9.8 kg/m²
 Rod Dia : 2 mm Open Area 43.8 %
 Max Thickness : 5 mm



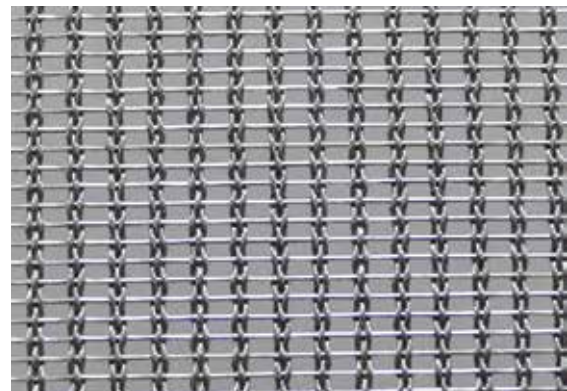
HMF-M2268

Material : Stainless Steel & Aluminum
 Cable Dia : 2 mm Rod Pitch : 8 mm
 Cable Pitch : 6 mm Weight : 5.2 kg/m²
 Rod Dia : 2 mm Open Area 50.1 %
 Max Thickness : --- mm



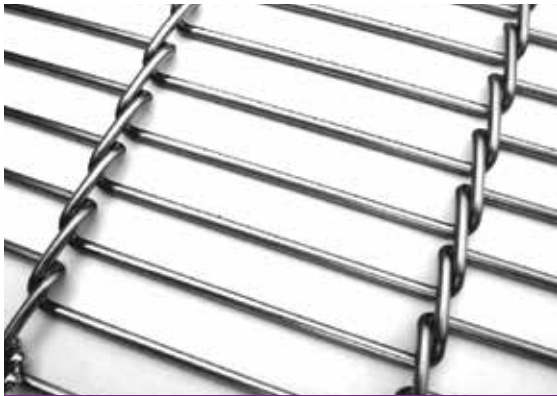
HMF-M3165T

Material : Copper
 Cable Dia : 0.48 mm x 3 Rod Pitch : 16 mm
 Cable Pitch : 3.5 mm Weight : 2.3 kg/m²
 Rod Dia : 0.5 mm Open Area 40.5 %
 Max Thickness : 1.5 mm



HMF-M3165

Material : Stainless Steel
 Cable Dia : 0.45 mm x 3 Rod Pitch : 1.6 mm
 Cable Pitch : 3.5 mm Weight : 2.1 kg/m²
 Rod Dia : 0.5 mm Open Area 40.5 %
 Max Thickness : 1.5 mm



HMF-AH2

Material : Stainless Steel
 Wire Dia : 1.5 mm Weight : 3 kg/m²
 10 x 50 mm Open Area 76.8 %
 Max Thickness : 3.05 mm



HMF-AH3

Material : Copper
 Wire Dia : 1.6 mm Weight : 2.5 kg/m²
 7 x 120 mm Open Area 76 %
 Max Thickness : 3.06 mm



HMF-M2175T

Material : Copper
 Cable Dia : 2 mm Rod Pitch : 1.55 mm
 Cable Pitch : 17.5 mm Weight : 11.67 kg/m²
 Rod Dia : 1.5 mm Open Area 0 %
 Max Thickness : 4 mm



HMF-M2175

Material : Stainless Steel
 Cable Dia : 2 mm Rod Pitch : 3.75 mm
 Cable Pitch : 6 mm Weight : 5.2 kg/m²
 Rod Dia : 1.5 mm Open Area 44 %
 Max Thickness : 5 mm



HMF-M2174

Material : Stainless Steel
 Cable Dia : 2 mm (1x19) Rod Pitch : 1.6 mm
 Cable Pitch : 17.5 mm Weight : 10.7 kg/m²
 Rod Dia : 1.5 mm Open Area 5 %
 Max Thickness : 4 mm



HMF-2175T

Material : Copper
 Cable Dia : 2 mm Rod Pitch : 3.75 mm
 Cable Pitch : 17.5 mm Weight : 5.2 kg/m²
 Rod Dia : 1.5 mm Open Area 51 %
 Max Thickness : 4 mm

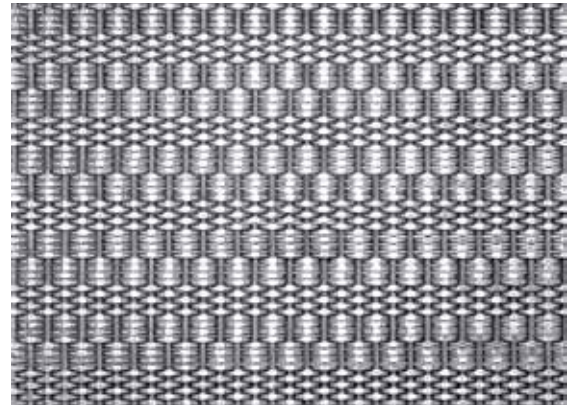


METAL FABRIC



HMF-AG0845

Material : Stainless Steel
 Wire Dia : 0.787 mm Weight : 2.8 kg/m²
 Aperture 5.435 mm Open Area 76 %
 Max Thickness : 5.2 mm



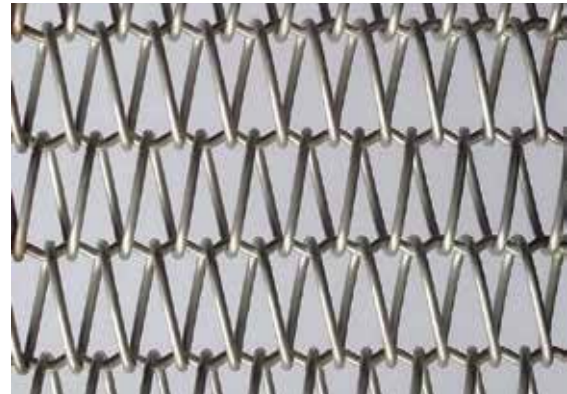
HMF-M1445

Material : Stainless Steel
 Cable Dia : 1.5 mm x 1 Rod Pitch : 1.7 mm
 Cable Pitch : 5 mm Weight : 11.26 kg/m²
 Rod Dia : 1.5 mm Open Area 8 %
 Max Thickness : 4.5 mm



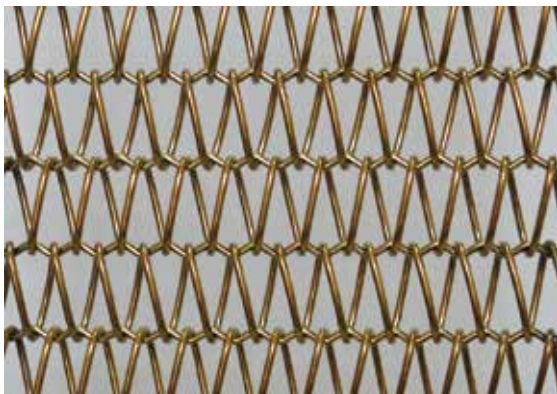
HMF-M33

Material : Stainless Steel
 Cable Dia : 1.5 mm x 3 Rod Pitch : 7.5 mm
 Cable Pitch : 5 mm Weight : 15 kg/m²
 Rod Dia : 2.5 mm Open Area 8 %
 Max Thickness : 4 mm



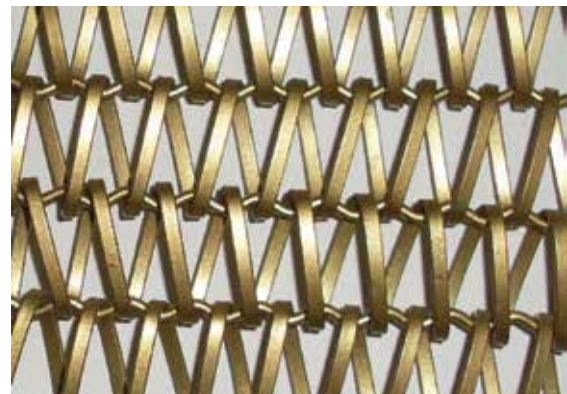
HMF-A1283

Material : Stainless Steel
 Spiral Dia : 1.2 mm Cross Rod Pitch: 13 mm
 Spiral Pitch : 8 mm Weight : 3.5 kg/m²
 Cross Rod Dia : 1.3 mm Open Area 63 %
 Max Thickness : 7.5 mm



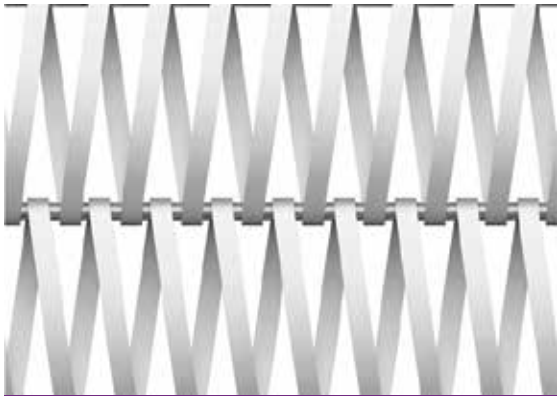
HMF-M1615

Material : Stainless Steel
 Spiral Dia : 1.2 mm Cross Rod Pitch: 14 mm
 Spiral Pitch : 8 mm Weight : 5.0 kg/m²
 Cross Rod Dia : 1.2 mm Open Area 64 %
 Max Thickness : 7.5 mm



HMF-A1622B

Material : Copper
 Spiral Dia : 0.8 x 2.5mm Cross Rod Pitch: 16 mm
 Spiral Pitch : 8 mm Weight : 7 kg/m²
 Cross Rod Dia : 1.6 mm Open Area 54 %
 Max Thickness : 8 mm



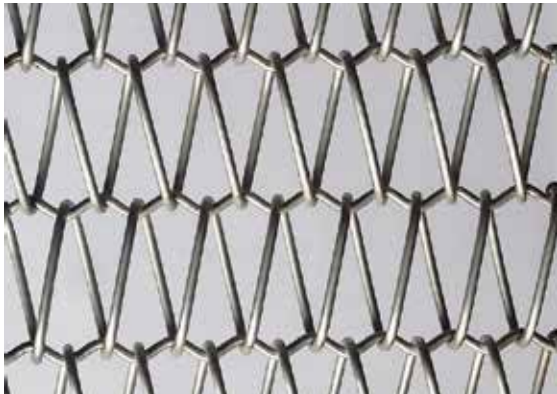
HMF-A5016

Material : Stainless Steel
 Spiral Dia : 1.2 x 6 mm Cross Rod Pitch: 50 mm
 Spiral Pitch : 15 mm Weight : 12.5
 Cross Rod Dia : 5 mm Open Area kg/18 %
 Max Thickness : 10 mm m²



HMF-A2515

Material : Iron
 Spiral Dia : 2.2 mm Cross Rod Pitch: 25 mm
 Spiral Pitch : 15 mm Weight : 5.25 kg/
 Cross Rod Dia : 2.2 mm Open Area m²
 Max Thickness : 7.5 mm 64.4 %



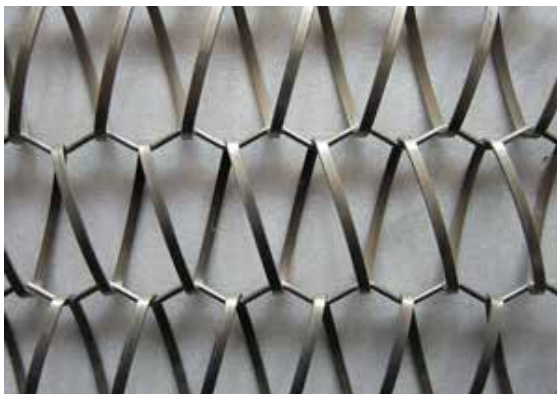
HMF-M2624

Material : Stainless Steel
 Spiral Dia : 2.6 mm Cross Rod Pitch: 24.3 mm
 Spiral Pitch : 22.5 mm Weight : 4.06kg/m²
 Cross Rod Dia : 2.6 mm Open Area 68.7 %
 Max Thickness : 7.5 mm



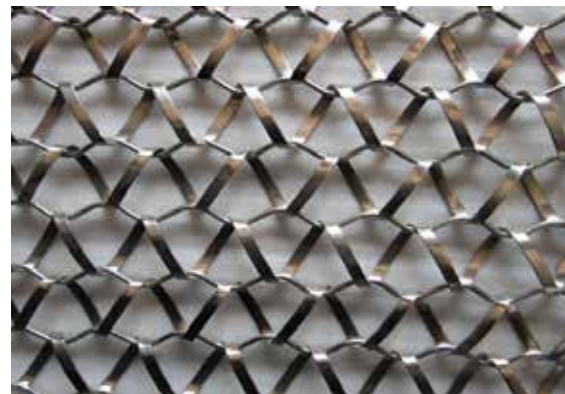
HMF-A3245B

Material : Stainless Steel
 Spiral Dia : 3.2 mm Cross Rod Pitch: 40 mm
 Spiral Pitch : 20 mm Weight : 9.3kg/m²
 Cross Rod Dia : 3.5 mm Open Area 55 %
 Max Thickness : 6 mm



HMF-A3264B

Material : Stainless Steel
 Spiral Dia : 3.2 mm Cross Rod Pitch: 64.5 mm
 Spiral Pitch : 36 mm Weight : 5.6kg/m²
 Cross Rod Dia : 3 mm Open Area 69 %
 Max Thickness : 6.5 mm



HMF-A3338B

Material : Stainless Steel
 Spiral Dia : 1 x 7.2 mm Cross Rod Pitch: 30 mm
 Spiral Pitch : 38 mm Weight : 5.3kg/m²
 Cross Rod Dia : 3 mm Open Area 80 %
 Max Thickness : 6.5 mm

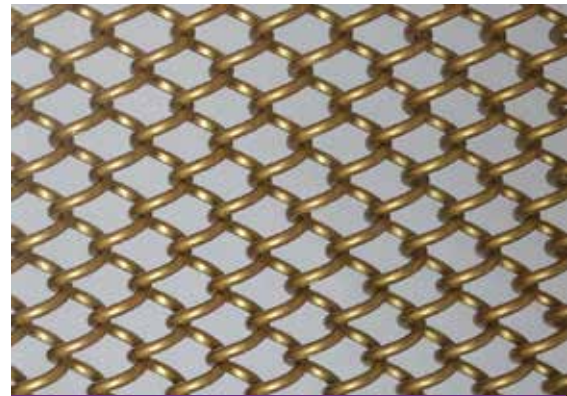


METAL FABRIC



HMF-AG1006G

Material : Stainless Steel
 Finish : Plating Wire Pitch : 10 mm
 Wire Dia : 1 mm Weight : 2.8 kg/m²
 Aperture : 6 mm Open Area 82.5 %
 Max Thickness : 8 mm



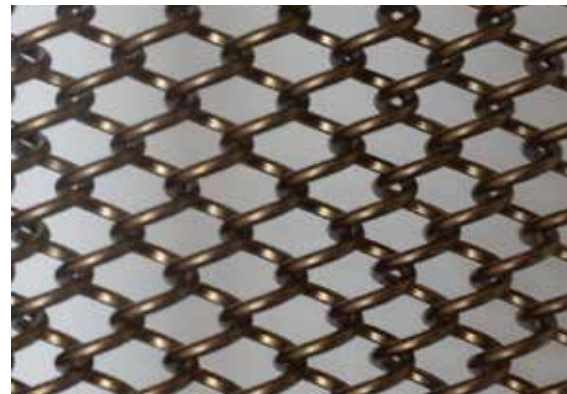
HMF-AG1242

Material : Aluminum
 Finish : Paiting Wire Pitch : 8 mm
 Wire Dia : 1.2 mm Weight : 2.1 kg/m²
 Aperture : 4.2 mm Open Area 72.9 %
 Max Thickness : 6.8 mm



HMF-AG1250

Material : Aluminum
 Finish : Paiting Wire Pitch : 9 mm
 Wire Dia : 1.2 mm Weight : 1.7 kg/m²
 Aperture : 5 mm Open Area 76.3 %
 Max Thickness : 7.4 mm



HMF-AG1260

Material : Aluminum
 Finish : Paiting Wire Pitch : 10 mm
 Wire Dia : 1.2 mm Weight : 1.4 kg/m²
 Aperture : 6 mm Open Area 79.2 %
 Max Thickness : 8.4 mm



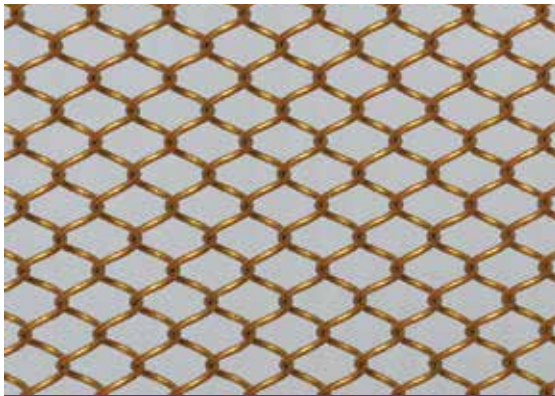
HMF-AG1500

Material : Aluminum
 Finish : Paiting Wire Pitch : 9 mm
 Wire Dia : 1 mm Weight : 1.1 kg/m²
 Aperture : 5 mm Open Area 80 %
 Max Thickness : 7 mm



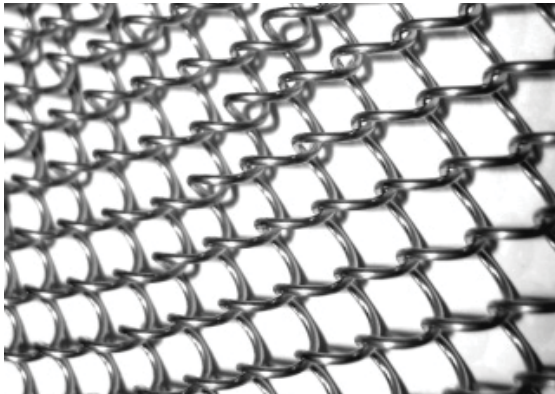
HMF-AG1580

Material : Aluminum
 Finish : Paiting Wire Pitch : 12 mm
 Wire Dia : 1.5 mm Weight : 1.8 kg/m²
 Aperture : 8 mm Open Area 79.3 %
 Max Thickness : 11 mm



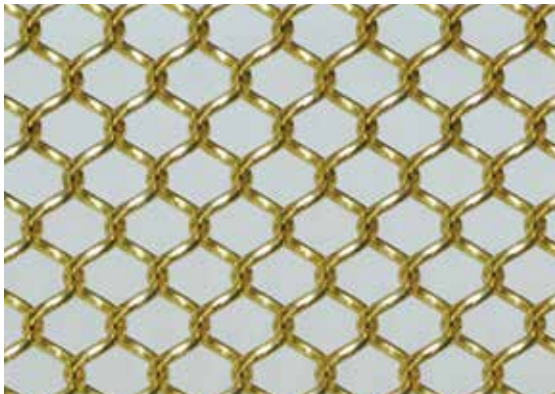
HMF-AG0840

Material : Aluminum
 Finish : Paiting Wire Pitch : 7.5 mm
 Wire Dia : 0.8 mm Weight : 0.85 kg/m²
 Aperture : 4 mm Open Area 80.4 %
 Max Thickness : 5.6 mm



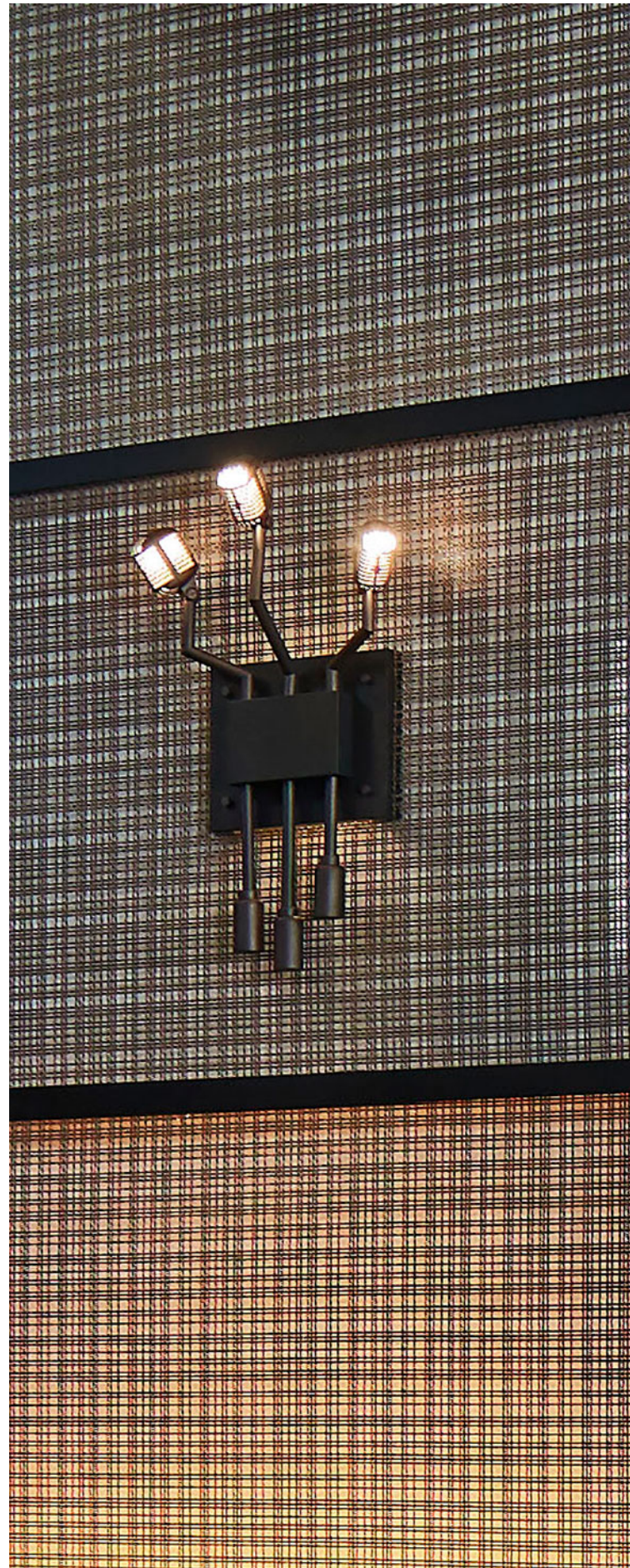
HMF-AG1006

Material : Stainless Steel
 Finish : Paiting Wire Pitch : 10 mm
 Wire Dia : 1.0 mm Weight : 2.8 kg/m²
 Aperture : 6 mm Open Area 82.5 %
 Max Thickness : 8 mm



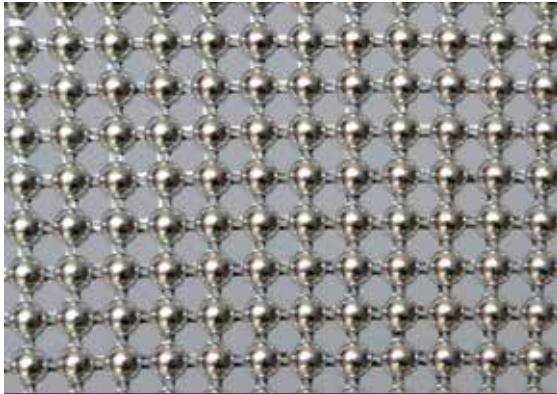
HMF-AG1042

Material : Aluminum
 Finish : Anodizing Wire Pitch : 8 mm
 Wire Dia : 1.0 mm Weight : 1.3 kg/m²
 Aperture : 4.2 mm Open Area 77.1 %
 Max Thickness : 6.2 mm



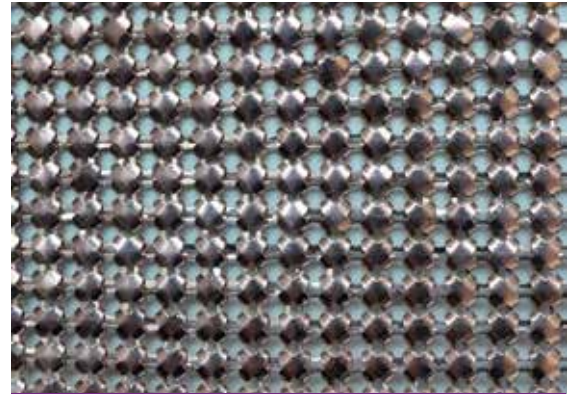


METAL FABRIC



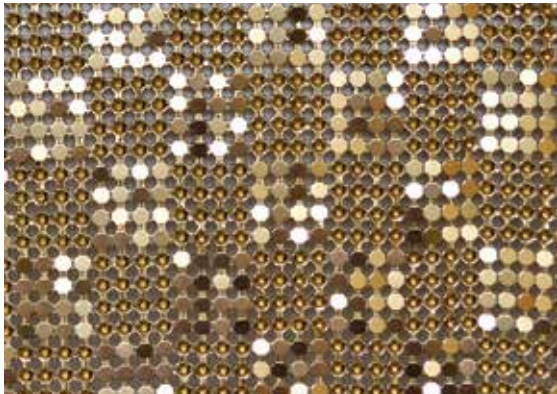
HMF-B-A

Material : Aluminum Alloy
Size : 4 mm Dia.



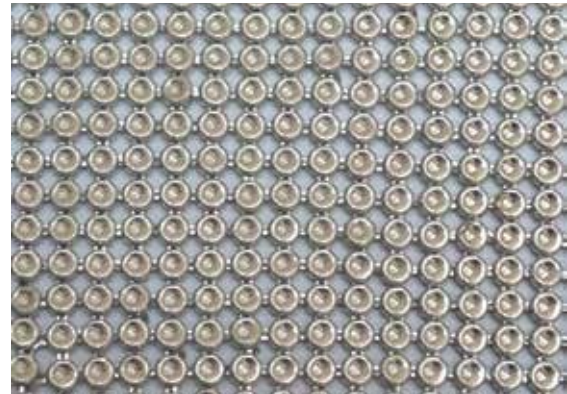
HMF-B-B

Material : Aluminum Alloy
Size : 4 mm Dia.



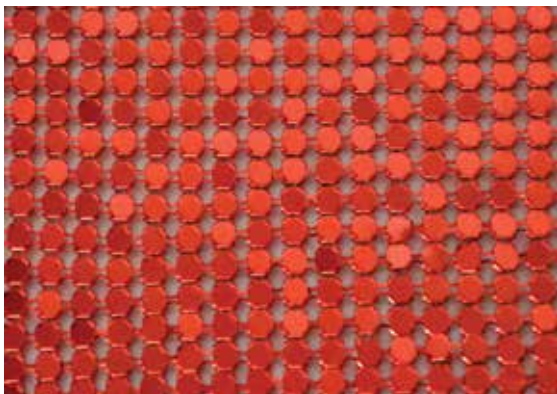
HMF-B-C

Material : Aluminum Alloy
Size : 3 mm Dia.



HMF-B-D

Material : Aluminum Alloy
Size : 2 mm Dia.



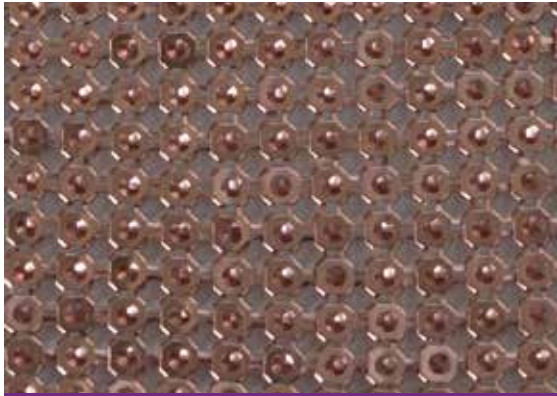
HMF-B-E

Material : Aluminum Alloy
Size : 3 mm Dia.



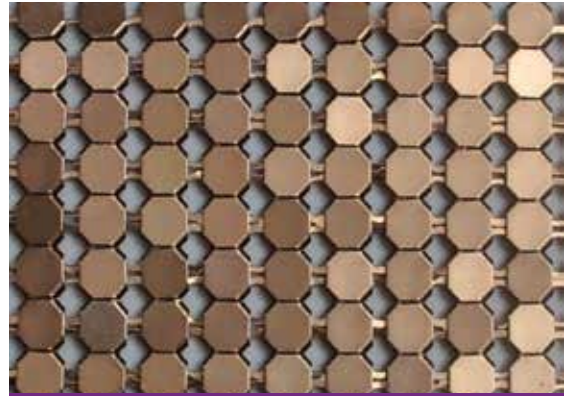
HMF-B-F

Material : Aluminum Alloy
Size : 7 mm Dia.



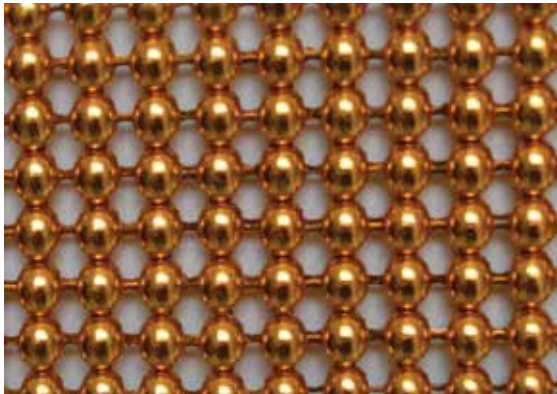
HMF-B-G

Material : Aluminum Alloy
Size : 4 mm Dia.



HMF-B-H

Material : Aluminum Alloy
Size : 6 mm Dia.



HMF-B-I

Material : Aluminum Alloy
Size : 4 mm Dia.



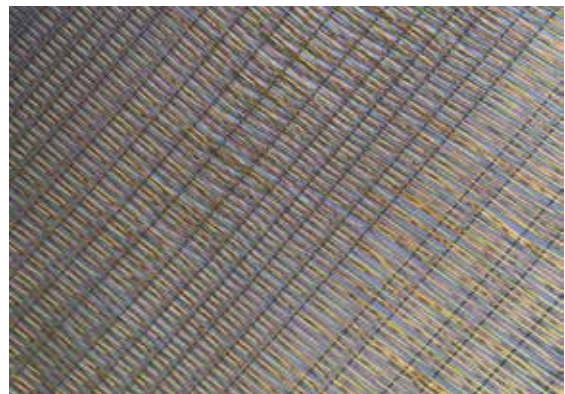
HMF-R-01

Material : Glass Laminated Stainless Steel



HMF-R-02

Material : Glass Laminated Stainless Steel

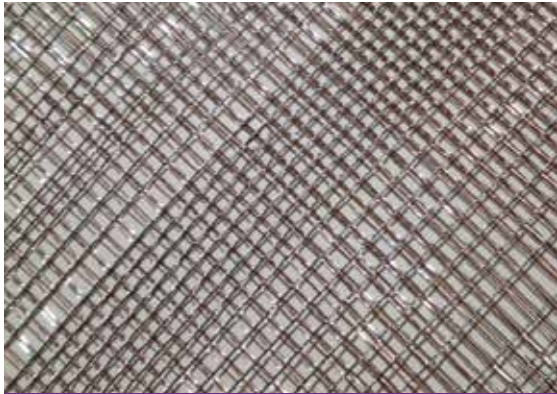


HMF-R-03

Material : Glass Laminated Stainless Steel

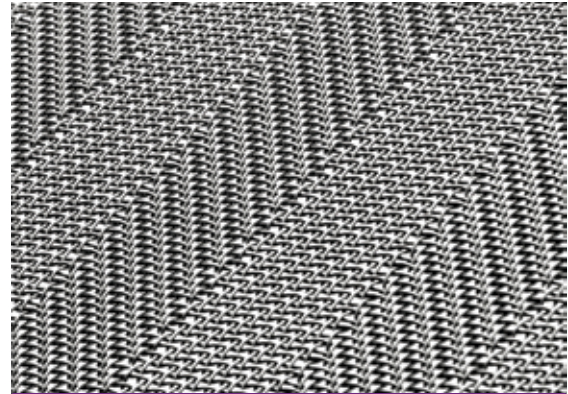


METAL FABRIC



HMF-R-04

Material : Glass Laminated Stainless Steel



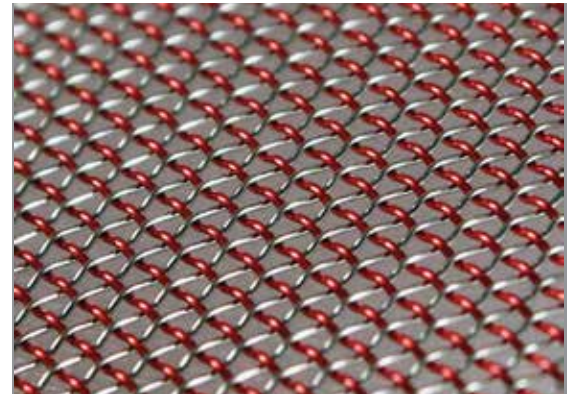
HMF-R-05

Material : Glass Laminated Stainless Steel



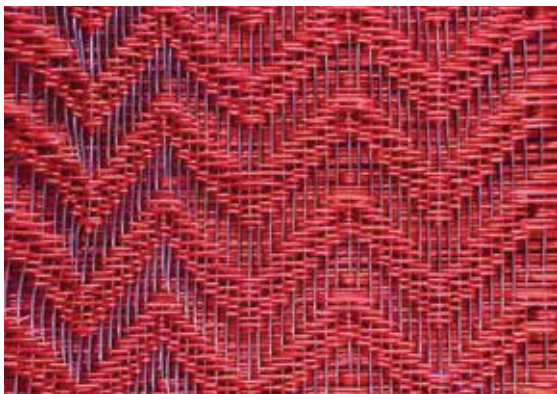
HMF-R-06

Material : Glass Laminated Stainless Steel



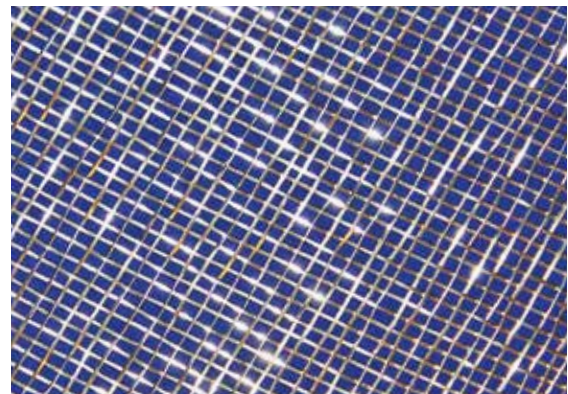
HMF-R-07

Material : Glass Laminated Stainless Steel



HMF-R-08

Material : Glass Laminated Stainless Steel



HMF-R-09

Material : Glass Laminated Stainless Steel



❖ Surface Treatment

Hidayath manufactures most products in mill finish condition. To better serve our customers, we have reached a number of secondary finishes that work well with woven wire mesh for both interior and exterior architectural applications. We can assist in the early design stage by identifying appropriate raw material and establishing a specification that will produce the desired final finish.

When appropriate, Hidayath can provide the specified finish and deliver the fabricated material ready to install. Typical finishes applied to wire mesh to achieve corrosion resistance, color, and reflectivity desired include Electrolytic polishing of stainless steel, power coat, anodizing, plating, spraying painting and many other copper based alloy finishes.

❖ Anodizing

Anodizing is an electrolytic passivation process used to increase the thickness of the natural oxide layer on the surfaces of the metal parts. The process is called anodizing because the part to be treated forms the anode electrode of an electrical circuit. Anodizing increases resistance to the corrosion and wear, and provides better adhesion for paint primer and glues that adhere bare metal.

❖ SPRAY PAINTING

Spray painting technology makes metal meshes have more color selection for the colors to fit the whole decoration style to be connected.

❖ PVD

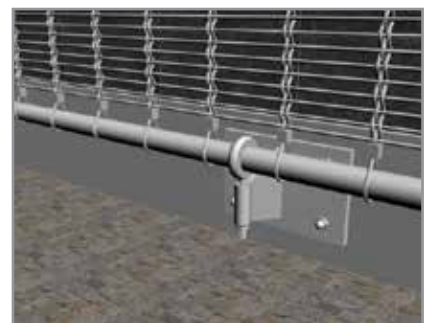
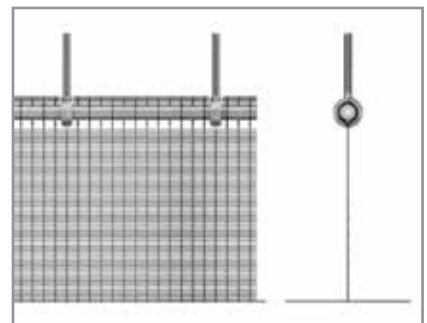
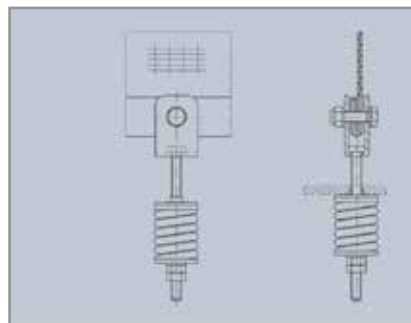
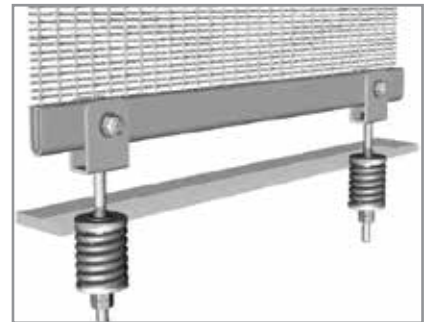
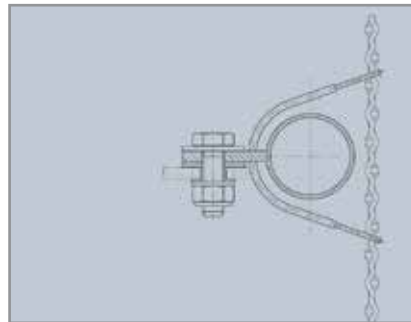
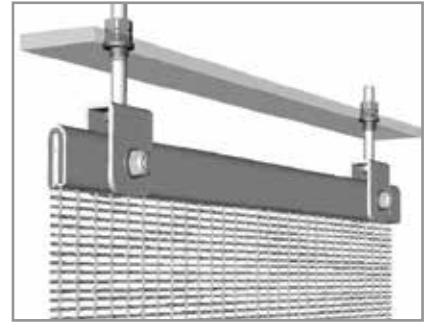
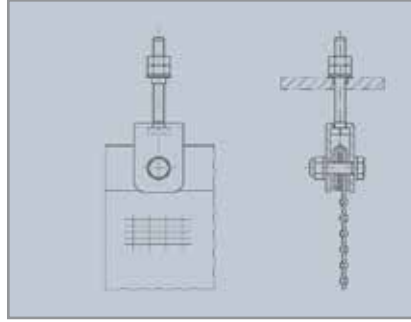
PVD Coating is economic and easy method for wire mesh surface treatment, it can easily make many colors at the same time fully to be protected the mesh, improve corrosion resistance and wearlessness of the mesh, the weak point is that couldn't be shown metal right characteristics on the surface.

❖ Antique Plated Finish

A decorative antique plated finish can really bring out the texture of a woven wire mesh in ways that other coatings cannot. The thin layer of metal does not mask the detail of the wire mesh but rather highlights it. The antique plated finish process introduces a dark oxide layer over top of bright plated alloy. Then, visual depth is created by physically relieving the high points of the wire mesh allowing the bright plated alloy to show through. A thin layer of lacquer is applied after plating to help preserve the finish from further tarnishing.

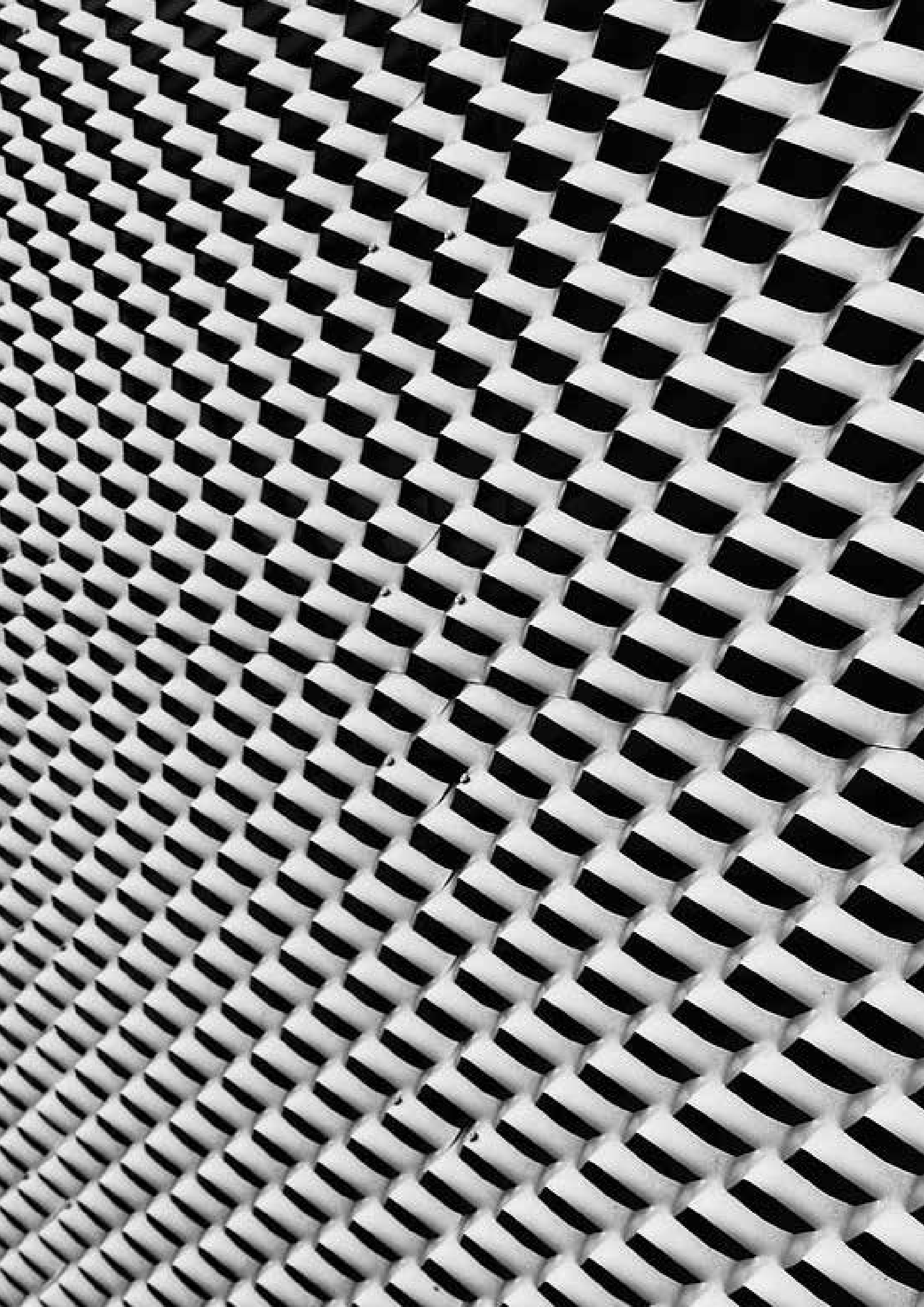


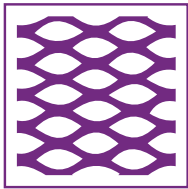
INSTALLATION



APPLICATIONS







EXPANDED METALS

CONCEPT & APPLICATIONS

CONCEPT

Expanded metal mesh, as the name suggests, is the process in which a plain sheet of stainless steel or aluminum is expanded by creating openings into the material through special dies which can vary in design as per customer requirements. This in turn results in the sheet to “expand” or elongate.

Stainless steel expanded metal is made from the sheets or coils of stainless steel, which are uniformly slit and stretched, forming a diamond pattern of openings in the finished sheet. It has various patterns by the adjustment of thickness, strand and the diamond openings size.

Expanded metal is stronger than an equivalent weight of wire mesh such as chicken wire, because the material is flattened, allowing the metal to stay in one piece. The other benefit to expanded metal is that the metal is never completely cut and reconnected, allowing the material to retain its strength.

APPLICATIONS

- Architectural
- Ceilings
- Partitions
- Column covers
- Facades
- Safety and Security



EXPANDED METALS

HEX 150



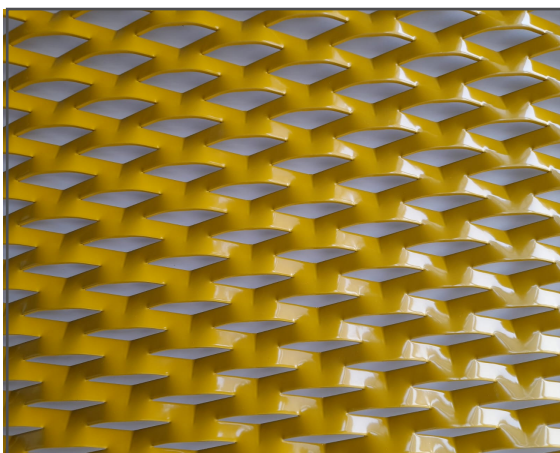
Application:

- Due to its strength & high open area HEX150 can find good scope in industrial application like fence or demarcation.
- As for its architectural design it can be used in interior design as false ceiling as well.

Material : Stainless steel, Aluminum, Mild steel				
Substrate Finish: Mill				
Technical specification				
LWD x SWD Mesh	Strand Width	Max Thickness	Thickness Range	Open Area
mm	mm	mm	mm	%
150 x 64	8	3-5	Al (1.5-5) MS, SS(1.5-3)	75

Variation			
LWD (mm)	SWD (mm)	Strand Width (mm)	Thickness (mm)
150	35	18	2,3,4
	45	20	2,3,4
	55	24	2,3,4
	65	28	2,3,4

HEX 62



Application:

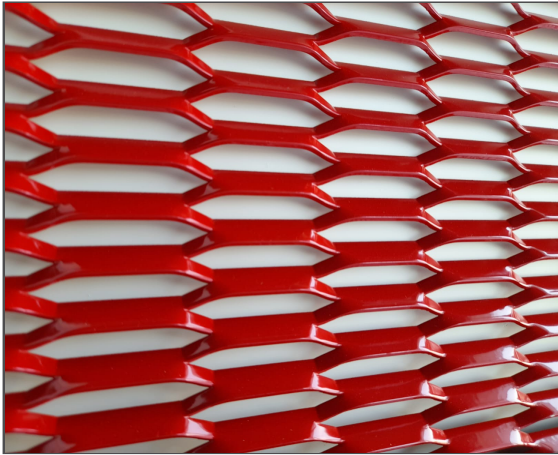
- With its architectural design HEX62 gives a new look in facades especially in parapets. The diamond shaped pattern along with the significant open area adds beauty to interior designs by creating privacy with a good light passage.

Material : Stainless steel, Aluminum, Mild steel				
Substrate Finish: Mill				
Technical specification				
LWD x SWD Mesh	Strand Width	Max Thickness	Thickness Range	Open Area
mm	mm	mm	mm	%
62 x 22	6	3	SS(1.2-2), MS, AL(1.5-4)	45

Variation			
LWD (mm)	SWD (mm)	Strand Width (mm)	Thickness (mm)
62	16	4	2,3,4
	20	8	2,3,4
	24	12	2,3,4
	28	14	2,3,4



HEX 92



Application:

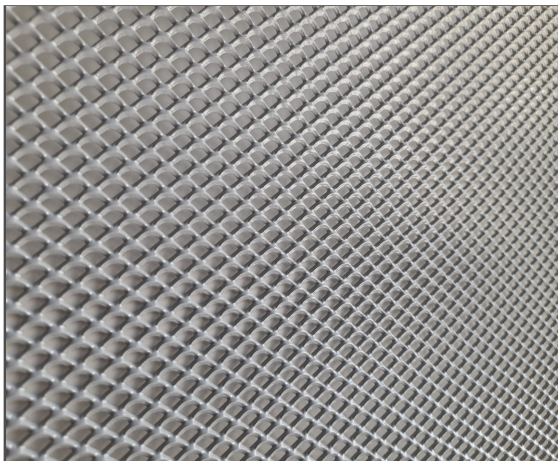
- With very low percentage open area HEX92 find application in facade where significant light reflectance is needed with very low light passage.
- Very good for architectural purposes.
- Very high corrosion resistance.

Material : Stainless steel, Aluminum, Mild Steel				
Substrate Finish: Mill				
Technical specification				
Mesh LWD x SWD	Strand Width	Max Thickness	Thickness s Range	Open Area
mm	mm	mm	mm	%
92 x 28	5	4	SS(0.8-1.5) Al(1.5-4)	65

Variation

LWD (mm)	SWD (mm)	Strand Width (mm)	Thickness (mm)
92	28	10	2,3,4
	32	14	2,3,4
	36	18	2,3,4
	40	20	2,3,4

HEX 10



Application:

- HEX10 is a perfect clad for walls in conference rooms, columns in the hall or strategically place in lobby because of its aesthetic appearance for design. Highly recommended for interior designs. Very high corrosion resistance.

Material : Stainless steel, Aluminum, Mild Steel				
Substrate Finish: Mill				
Technical specification				
Mesh LWD x SWD	Strand Width	Max Thickness	Thickness Range	Open Area
mm	mm	mm	mm	%
10 x 7	2	2	SS, Al (0.8-2)	45

Variation

LWD (mm)	SWD (mm)	Strand Width (mm)	Thickness (mm)
10	5	1.5	1.5
	6	2	1.5
	7	1	1
	7	2	1.5



EXPANDED METALS

HEX 76



Application:

- Provides aesthetic appearance in the most simple manner of a diamond pattern with a versatile usage. Can be used in suspended ceilings, also has various interior and exterior applications.

Material : Stainless steel, Aluminum, Mild steel			
Substrate Finish: Mill			
Technical specification			
Variation			
LWD (mm)	SWD (mm)	Strand Width (mm)	Thickness (mm)
76	33	11	2
	25	3	2
	27	4	2
	30	6	2

HEX 165



Application:

- Main application is on the façade of various buildings or towers which stands out as a feature. Can also be used in the interiors as partitions.

Material : Stainless steel, Aluminum, Mild steel			
Substrate Finish: Mill			
Technical specification			
Variation			
LWD (mm)	SWD (mm)	Strand Width (mm)	Thickness (mm)
165	50	20	2



HEX - 100



Application:

- Mainly used as car park facades, wall partitions and also in ceilings depending on the opening percentage.

Material : Stainless steel, Aluminum, Mild Steel			
Substrate Finish: Mill			
Technical specification			
Variation			
LWD (mm)	SWD (mm)	Strand Width (mm)	Thickness (mm)
100	38	14	2
	35	10	2
	30	5	2
	46	20	1.5

HEX - 110



Application:

- Mainly used as car park facades, wall partitions and also in ceilings depending on the opening percentage.

Material : Stainless steel, Aluminum			
Substrate Finish: Mill			
Technical specification			
Variation			
LWD (mm)	SWD (mm)	Strand Width (mm)	Thickness (mm)
110	40	15	2
	35	10	2
	30	5	2
	46	20	1.5



APPLICATIONS





QUALITY POLICY

The management of Hidayath Group is committed to continuous quality improvement and is most conscious of the need to;

* Sustain continuous improvement in quality standards of services provided by the company and ensure that all contractual requirements of its customers are consistently achieved.

* Provide documented assurance to determinate that specified customer requirements have, can, and will be achieved.

To meet these objectives, the application of the Quality System outlined in Quality Manual has been developed in accordance with the requirement of ISO 9001:2008.

Compliance with the requirements of the detailed procedures outlined in the Quality Manual is mandatory for all staff members.



Our efficient R & D enhances the current business by:

- Continuous technology up-gradation by identifying Industry benchmarks
- Identifying the gaps and prioritize areas of immediate improvement
- Ensuring inter-facility integration
- Speedy application and implementation of advanced technology
- Identifying better methods through critical analysis & brainstorming for all the critical operations/processes with an overall objective of improving the productivity of all these sources.

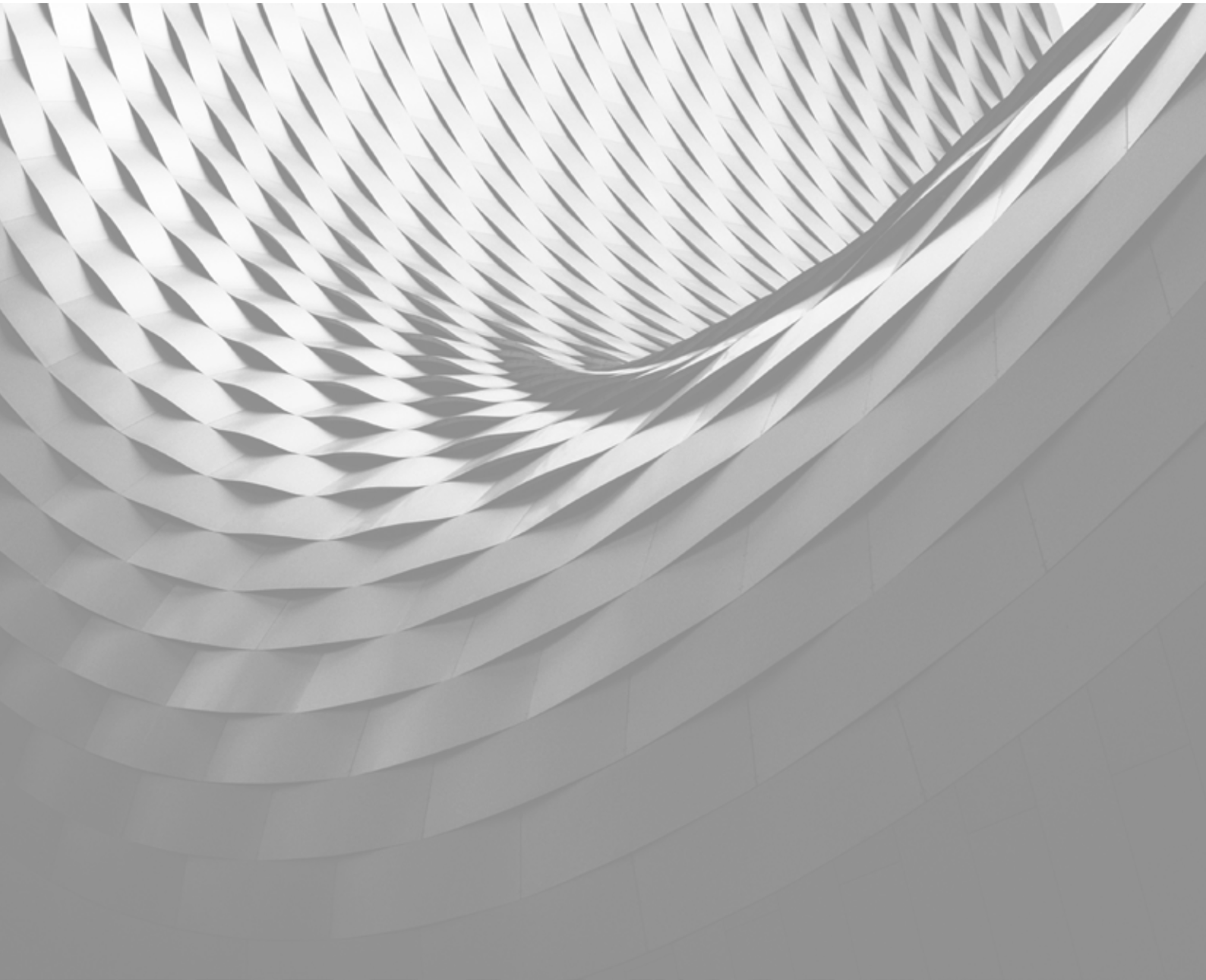






P.O. Box : 13650, Dubai, UAE
T: +971 4 885 77 00, F: +971 4 885 70 70
info@hidayath.com, www.hidayath.com

UAE | Oman | Qatar | Saudi Arabia | India



Representatives for Middle East & Africa

Office 103B, Building No 5, Dubai Design District,
Dubai, United Arab Emirates
Tel: +971 4 278 1100
Email: h-arch@hidayath.com